



## NRC Publications Archive Archives des publications du CNRC

### Overwintering of barges in the Beaufort - assessing ice issues and damage potential

Barker, Anne; Timco, Garry

For the publisher's version, please access the DOI link below./ Pour consulter la version de l'éditeur, utilisez le lien DOI ci-dessous.

#### **Publisher's version / Version de l'éditeur:**

<https://doi.org/10.4224/21268047>

*Technical Report, 2012-08-01*

#### **NRC Publications Record / Notice d'Archives des publications de CNRC:**

<https://nrc-publications.canada.ca/eng/view/object/?id=06003e42-c710-45ea-95f9-150cf0d728a7>

<https://publications-cnrc.canada.ca/fra/voir/objet/?id=06003e42-c710-45ea-95f9-150cf0d728a7>

Access and use of this website and the material on it are subject to the Terms and Conditions set forth at

<https://nrc-publications.canada.ca/eng/copyright>

READ THESE TERMS AND CONDITIONS CAREFULLY BEFORE USING THIS WEBSITE.

L'accès à ce site Web et l'utilisation de son contenu sont assujettis aux conditions présentées dans le site

<https://publications-cnrc.canada.ca/fra/droits>

LISEZ CES CONDITIONS ATTENTIVEMENT AVANT D'UTILISER CE SITE WEB.

**Questions?** Contact the NRC Publications Archive team at

PublicationsArchive-ArchivesPublications@nrc-cnrc.gc.ca. If you wish to email the authors directly, please see the first page of the publication for their contact information.

**Vous avez des questions?** Nous pouvons vous aider. Pour communiquer directement avec un auteur, consultez la première page de la revue dans laquelle son article a été publié afin de trouver ses coordonnées. Si vous n'arrivez pas à les repérer, communiquez avec nous à PublicationsArchive-ArchivesPublications@nrc-cnrc.gc.ca.





# **OVERWINTERING OF BARGES IN THE BEAUFORT - ASSESSING ICE ISSUES AND DAMAGE POTENTIAL**

**Anne Barker and Garry Timco  
Ocean, Coastal and River Engineering,  
National Research Council of Canada  
Ottawa, ON K1A 0R6  
Canada**

**Report prepared for  
Beaufort Regional Environmental Assessment Program**

**Technical Report  
OCRE-TR-2012-008**

**August 2012**



National Research  
Council Canada

Conseil national  
de recherches Canada

**Canada**



## EXECUTIVE SUMMARY

Overwintering of vessels and barges has been carried out in the Arctic for many years, in the Beaufort as well as in other regions of the Arctic and southern Canada. Draft guidelines from Transport Canada exist for this practice. However, there is uncertainty concerning the damage potential for structures that may be left to freeze-in within the landfast ice region of the Beaufort Sea, particularly those that contain petroleum products. This is a great concern for the Inuvialuit, among others.

There is evidence that this freeze-in could be (and has been) done safely but it is not clear how often this has been done or the conditions required to ensure safe overwintering of vessels in the Beaufort Sea. No information exists on the likelihood of damage due to ice or its possible effects. A detailed study focused on the conditions of the Beaufort Sea would greatly aid many stakeholders on the magnitude of this problem and its possible impact.

This study brought together different types of relevant data and information to resolve this important issue, with a focus on the ice loading considerations. As such, the objective of this project was to assess the damage potential for vessels or barges overwintering in land-fast ice. The project will inform the Inuvialuit and Regulators on the likelihood of damage and provide information on the best-available means of reducing the likelihood of damage to vessels overwintering in ice in the nearshore region of the Beaufort Sea.

The report steps through illustrative scenarios, in order to provide examples of the types of ice loads that could occur in representative overwintering locations. These scenarios lead to the provision of a framework of methods used to evaluate ice loads on vessels. This framework can be applied to assess ice loads on a specific vessel with known structural integrity at a specific location, by a team of qualified operational, ice mechanic and naval architect experts. No design considerations are provided, as that assessment would be too case specific to be of use in an overview of this subject area.

The authors conclude that a sheltered spot, with a limited fetch area, to limit pack ice driving forces is a key factor to minimizing the likelihood of damage due to ice. It is not sufficient to say that a vessel will be in landfast ice conditions throughout the winter. There are many locations where a vessel may be in landfast ice conditions for most of the winter, but the vessel may be in dynamic conditions come the spring break-up period. During this period, depending upon the location, ice crushing forces on a vessel and/or ice loads can be sufficient to break mooring lines and potentially damage a vessel. Thus, the overwintering location should have minimal dynamic ice movement in the spring, to avoid this scenario.

Finally, in order to partially alleviate concerns about the practice of overwintering, and more specifically, overwintering of fuel barges, the authors recommend that the Inuvialuit Settlement Region implement their own record-keeping of fuel barges that are overwintering. This would take the form of a simple record of location, vessel and contact information. Having a record of overwintering, and a method of tracking it, may help to provide more data on the practice, guidance on best practices related to overwintering (such as notification for affected communities and those travelling in the vicinity of the vessel), and peace of mind in terms of sound site selection practices and monitoring.

## TABLE OF CONTENTS

<b>EXECUTIVE SUMMARY .....</b>	<b>i</b>
<b>TABLE OF CONTENTS .....</b>	<b>ii</b>
<b>TABLE OF FIGURES .....</b>	<b>iii</b>
<b>TABLES .....</b>	<b>iv</b>
<b>1. INTRODUCTION.....</b>	<b>1</b>
<b>2. OVERVIEW – OVERWINTERING IN ICE.....</b>	<b>3</b>
2.1 Historical Overview of Overwintering in the Western Arctic .....	3
2.2 Draft Arctic Waters Guidelines for Lay-Up of Petroleum Barges in Landfast Ice .....	7
2.3 Transport Canada Consultation Activities .....	8
2.4 Local Concerns .....	8
<b>3. ANALYSIS APPROACH.....</b>	<b>12</b>
<b>4. SHELTERED BAY .....</b>	<b>13</b>
4.1 Freeze-up.....	13
4.2 Winter Season .....	14
4.2.1 Adfreeze and Thickened ice .....	14
4.2.2 Thermal loads .....	16
4.3 Spring Break-up .....	19
<b>5. SEMI-SHELTERED BAY .....</b>	<b>21</b>
5.1 Freeze-up.....	21
5.2 Winter Season .....	21
5.3 Spring Break-up .....	21
<b>6. NON-SHELTERED REGION.....</b>	<b>24</b>
6.1 Freeze-up.....	24
6.2 Winter Season .....	25
6.3 Spring Break-up .....	26
<b>7. RIVER ICE.....</b>	<b>28</b>
<b>8. KEY CONSIDERATIONS FOR OVERWINTERING OF VESSELS IN ICE .....</b>	<b>30</b>
<b>9. RECOMMENDATIONS.....</b>	<b>32</b>
<b>10. ACKNOWLEDGEMENTS.....</b>	<b>35</b>
<b>11. REFERENCES .....</b>	<b>36</b>
<b>APPENDIX A - WESTERN ARCTIC WINTER LAYUP OF MARINE EQUIPMENT...A-1</b>	
<b>APPENDIX B - LETTER REGARDING OVERWINTERING OF FUEL.....B-1</b>	
<b>APPENDIX C - THERMAL LOAD CALCULATION METHODS.....C-1</b>	

## TABLE OF FIGURES

Figure 1: Map showing the BREA area of interest, courtesy of BREA website.....	2
Figure 2: Key historical overwintering locations (from Connelly, 2012). ....	3
Figure 3: Beaudril ice breaker fleet overwintering in Herschel Basin in the 1980's (from Connelly, 2012). ....	3
Figure 4: Esso CRI overwintering in Tuktoyaktuk Harbour, 2012. ....	4
Figure 5: CANMAR marine equipment overwintering in McKinley Bay, 1984 (from Connelly, 2012). ....	4
Figure 6: Tanker "Skauvann" overwintering fuel storage in Wise Bay in the 1980's (from Connelly, 2012). The tanker maintained a crew onboard year-round. ....	5
Figure 7: Photograph showing the small rubble feature about 100 m from the east edge of the shoal in McKinley Bay. ....	13
Figure 8: Photograph showing the ice around the perimeter of the CRI in Tuktoyaktuk harbour. ....	15
Figure 9: Photograph showing the crack in the ice in the vicinity of the CRI. ....	16
Figure 10: Graph showing the skin depth versus period for a thermal wave to penetrate into an ice sheet. ....	17
Figure 11: Schematic illustration of the temperature change, strain rate and stress in an ice sheet for the example discussed in the text. ....	19
Figure 12: Two MODIS images showing McKinley Bay in late spring, showing the non-dynamic nature of the break-up of the ice. On the left, from June 25, 2008, the ice is in the process of melting in the bay, while most of the landfast ice out of the bay has already been dynamically removed from the area. On the right, from June 27, 2011, the outer bay is still protected by landfast ice while the ice in the bay is melting in place. MODIS images: Terra satellite, Bands 7-2-1 colouring. ....	20
Figure 13: MODIS satellite image showing the break-up of ice in the region around Herschel Island. Note that the ice south of the island is still landfast. Image from June 18, 2009, Terra satellite, Bands 7-2-1 colouring. ....	22
Figure 14: MODIS satellite image showing the break-up of ice in the bay around Herschel Island. This break-out of ice presents a moving ice situation which will exert ice loads on a moored vessel. Image from June 29, 2009, Terra satellite, Bands 7-2-1 colouring. ....	22
Figure 15: Graph of the mean ice thickness for different regions of the Beaufort Sea. ....	23
Figure 16: Map showing the location of the hypothetical mooring location at Nelson Head at the southern tip of Banks Island (background image from Natural Resources Canada, De Salis Bay Map 97H 1:250 000, 2 <sup>nd</sup> Edition). ....	24
Figure 17: MODIS image showing the southern tip of Banks Island on November 2, 2011. Note the loose ice floes to the east of Island in the region of Nelson Head. Terra satellite, Bands 7-2-1 colouring. ....	25
Figure 18: Photograph showing an ice buckle at the SDC drilling platform at the Paktoa C-60 drill site. ....	26
Figure 19: MODIS satellite images showing the progressive break-up in the region south of Banks Island. Terra satellite, Bands 7-2-1 colouring. ....	27
Figure 20: Surface ice jam: East Channel near Inuvik, May 27, 2008; looking towards the left bank (from Beltaos et al. 2012). ....	29
Figure 21: Decision-making process flow chart for ice load considerations for an overwintering vessel. ....	32

## TABLES

Table 1 Transportation Safety Board MARSIS database results for overwintering-related incidents. Headers correspond with the database's labeling, for consistency. ....	6
Table 2: Summary of key ice loading considerations for each location and environmental scenario .....	30
Table 3: Comparison of illustrative scenario line loads developed in this report (values in MN/m width unless otherwise indicated). Type of loading indicated in parentheses. See the main report for details on associated ice thicknesses.....	31

# OVERWINTERING OF VESSELS IN THE BEAUFORT - ASSESSING ICE ISSUES AND DAMAGE POTENTIAL

## 1. INTRODUCTION

Overwintering of vessels has been carried out in the Arctic for many years, in the Beaufort as well as in other regions of the Arctic and southern Canada. However, there is uncertainty concerning the damage potential for vessels that may be left to freeze-in within the landfast ice region of the Beaufort Sea and the Mackenzie Delta, particularly those that contain petroleum products. This is a great concern for those within the Inuvialuit Settlement Region, among others. These concerns are varied, but most focus on:

1. whether vessels that are overwintering are suitably designed for that task;
2. whether the locations chosen for overwintering are suitable;
3. if all relevant loading scenarios by ice have been considered;
4. the ramifications if a spill occurs.

There is evidence that this freeze-in could be (and has been) done safely but it is not clear how often this has been done or the conditions required to ensure safe overwintering of vessels in the Beaufort Sea. While draft guidelines from Transport Canada exist for this practice, no information exists on the likelihood of damage or its possible effects. A detailed study focused on the conditions of the Beaufort Sea would greatly aid many stakeholders on the magnitude of this problem and its possible impact.

To that end, this report by the National Research Council of Canada (NRC) studies potential ice loads that could be experienced by vessels overwintering in ice. This is done through examinations of historical documents, discussions with the Inuvialuit, consultations with Transport Canada, individuals involved with northern shipping and the oil and gas industry. The project involved a literature review, a review of ice loading analytical models, fact finding of relevant information from key stakeholders, and a small field observation project.

Four inter-related factors were examined through those methods:

1. the ice conditions at typical overwintering locations in the Beaufort Sea;
2. an examination of the ice forces on a vessel during the early winter freeze-in, late-winter thermal and spring break-up processes;
3. an assessment of the damage to overwintering vessels (if any);
4. a general discussion about Inuvialuit concerns pertaining to this subject.

Together this information paints a picture of the ice-related issues associated with the practice of overwintering and the likelihood of damage due to ice loading processes. The project outlines the potential limits to the conditions required to ensure safe overwintering of vessels in the Beaufort Sea, in order to assess whether vessels or barges overwintering in land-fast ice could experience any significant damage. It should be noted that the focus of the research is primarily the Beaufort Sea, rather than the Mackenzie River, since the Beaufort Regional Environment Assessment (BREA) area of interest (Figure 1), which is the Inuvialuit Settlement Region (ISR), is the funding source of this research. However, given the nature of regional concerns, loading conditions that are more relevant to the river are also briefly examined. The results will help to inform Inuvialuit and Regulators on the likelihood of damage and provide information on the best-available means of reducing the likelihood of damage to vessels overwintering in ice in the nearshore region of the Beaufort Sea.



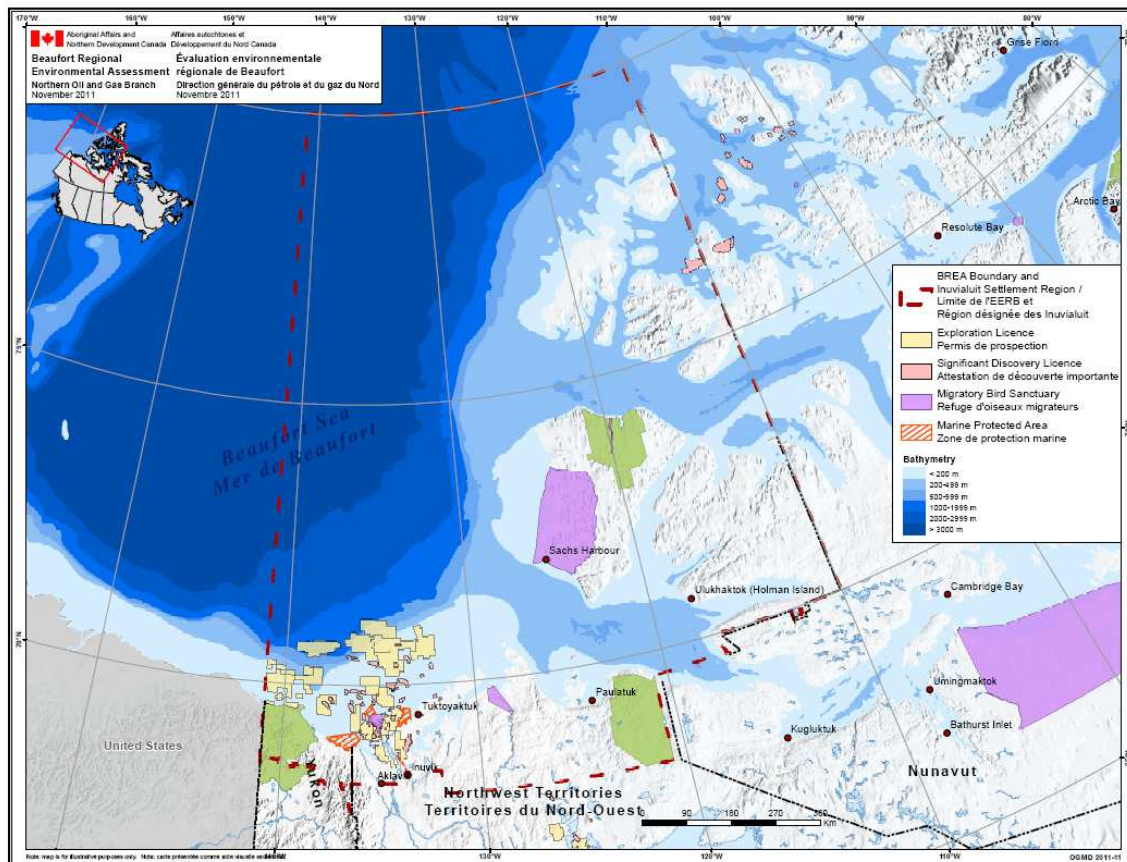


Figure 1: Map showing the BREA area of interest, courtesy of BREA website.

## 2. OVERVIEW – OVERWINTERING IN ICE

### 2.1 Historical Overview of Overwintering in the Western Arctic

Overwintering of vessels in the Beaufort Sea and the Mackenzie Delta has occurred regularly in recent history. A wide variety of vessels have been overwintered, ranging from fuel barges to oil and gas exploration structures and their support vessels. The practice also occurs in a variety of other locations, such as large rivers, including the St. Lawrence, and lakes, such as Great Slave Lake.

As part of this project, a historical overview (Connelly, 2012) that examines the practice of oil and gas exploration-related overwintering as it pertains to four key overwintering locations (Figure 2) was prepared. A brief discussion of overwintering practices in the Mackenzie River was also included. The full document may be found in Appendix A. Example images of overwintering in the four primary regions are shown in Figure 3 through Figure 6.



Figure 2: Key historical overwintering locations (from Connelly, 2012).



Figure 3: Beaudril ice breaker fleet overwintering in Herschel Basin in the 1980's (from Connelly, 2012).



**Figure 4: Esso CRI overwintering in Tuktoyaktuk Harbour, 2012.**



**Figure 5: CANMAR marine equipment overwintering in McKinley Bay, 1984 (from Connelly, 2012).**





**Figure 6: Tanker “Skauvann” overwintering fuel storage in Wise Bay in the 1980’s (from Connelly, 2012). The tanker maintained a crew onboard year-round.**

While most overwintering occurrences in these locations were of large, offshore structures, their supporting marine equipment often overwintered as well, including icebreakers and occasionally tankers used for fuel storage. As noted in the report (Connelly, 2012), there were two incidents related to overwintering in ice - one at Thetis Bay, Herschel Island (an exploration platform moved on mooring lines) and one in McKinley Bay (structural damage to a barge). Besides those two events, no reported damage has occurred due to ice in the four primary overwintering locations. Large petroleum barges used in the four locations noted above were double-hulled and ice strengthened while storage barges were double-hulled. In the Connelly (2012) report, within the Mackenzie River, one incident from 2008 is noted, when barges came off of their moorings during the river ice break-up period, and drifted towards the sea. No spill was reported.

The Government of the Northwest Territories department of Environment and Natural Resources (ENR) maintains a Hazardous Materials Spills database, with records dating back to 1971 ([http://www.enr.gov.nt.ca/live/pages/wpPages/Hazardous\\_Materials\\_Spill\\_Database.aspx](http://www.enr.gov.nt.ca/live/pages/wpPages/Hazardous_Materials_Spill_Database.aspx)). A search of this database for all regions found that the second event (McKinley Bay) was one of only two spills reported that the authors could convincingly link to the practice of overwintering. The McKinley spill itself was not directly related to the structural integrity of the vessel, but rather, because there was structural damage to the barge, fuel was being transferred off of it to another vessel – the spill occurred during the transferring process. The second spill event was a puncture to a barge hull off of Iqaluit. This second event will be described in more detail in section 4.2.1.

While there were other reported spills that occurred when ice was present (approximately 14 of interest, in addition to the two mentioned above), the ice did not appear to be a contributing factor to the reported spill. However, it was difficult to ascertain in some cases whether hull cracks or

other leaks in a vessel were due to ice, or if they were already present, prior to any ice formation. Additionally, ice conditions at the time of the reported spill were not always clear in the reports.

The previous database is solely related to spills (of any kind). The Transportation Safety Board MARSIS database of marine occurrences (<http://www.tsb.gc.ca/eng/incidents-occurrence/marine.asp>) is a compilation of reportable marine accidents and incidents. As such, a spill need not have occurred for an incident to be reported. Results in the database are a compendium of reported occurrences dating back to 1975. This timeframe is roughly concurrent with much of the intensive oil and gas exploration work that has occurred in the Beaufort Sea. The definitions of “reportable” marine accidents and incidents, however, are such that it is possible that some events relevant to this study might not have been reported. Given that caveat, a search of the database for potentially relevant accidents and incidents indicated up to eight cases of structural damage to a vessel, possibly due to an overwintering scenario, four of those in the area of interest (Table 1). One of those incidents corresponded to the McKinley Bay event mentioned previously, while the other three were in Tuktoyaktuk Harbour, Inuvik and Hay River. Of those remaining three incidents, in two cases, damage or flooding was due to the vessel being frozen to the bottom. All four reported incidents in the Arctic happened prior to 1992. Examinations of the nature of the ice loading conditions that may contribute to incidents such as these will be carried out in later sections of this report.

**Table 1 Transportation Safety Board MARSIS database results for overwintering-related incidents. Headers correspond with the database’s labeling, for consistency.**

Obs	OCC_NO	ACC_TYPE_ID	OCC_DATE	OCC_LOC	AREA_TYPE_ID	VESSEL_TYPE_ID	ENGLISH_COMMENT
153	9708-30-1	ICE DAMAGE	16-Jan-80	ARCTIC-N W T-MCKINLEY BAY	BAY	BARGE - OIL TANK / CARGO	MOVEMENT OF ICE CAUSED BARGE TO BE PRESSED AGAINST ADJACENT VESSEL.
771	9708-5-90	TAKING WATER	05-Jul-89	TUKTOYAKTUK HARBOUR ANCHORAGE, NWT	HARBOUR - WITHIN I.E. IMMEDIATE AREA	TUG - OTHER	VSL SUSTAINED DAMAGE WHILE AT WINTER LAY-UP, PROBABLY DUE TO ICE
893	1300-5-92	ICE DAMAGE	23-May-92	INUVIK, MACKENZIE RIVER, N.W.T.	HARBOUR - WITHIN I.E. IMMEDIATE AREA	RESEARCH/SURVEY-OTHER	FROZEN TO BOTTOM IN ICE, FLOODED AS RIVER LEVEL ROSE.
506	9708-30-1	TAKING WATER	08-May-86	HAY RIVER HBR,SOUTH SHORE GREAT SLAVE LAKE,NWT	HARBOUR - WITHIN I.E. IMMEDIATE AREA	BUOY TENDER/RE-SUPPLY	V/L SANK DUE TO BEING FROZEN TO LAKE BOTTOM DURING ICE BREAKUP

Also within the MARSIS database, there were over fifty incidents that were related to damage due to ice while vessels were moored at a harbour. Many of these were in locations where pack ice incursions from the sea can occur. Aside from these types of locations, there were other similar events with vessels coming loose of their moorings or sustaining damage due to moving ice, all in southern Canada locations along rivers (Saugeen River, Ontario; Port of Montreal, Quebec; North Saskatchewan River, Alberta). These latter cases are relevant to similar dynamic ice conditions that could be present in the Mackenzie River.

As an example of a more recent event regarding the practice of overwintering, in March 2012, the Nunavut Impact Review Board’s (NIRB) rejected Baffinland’s proposal to overwinter fuel for its

mining project (<ftp://ftp.nirb.ca/02-REVIEWS/ACTIVE%20REVIEWS/08MN053-BAFFINLAND%20MARY%20RIVER/>). As part of that review process, Environment Canada (EC) indicated that “EC does not consider the premeditated bulk fuel storage in land fast ice on/in water to be best practice. The freeze-in storage of fuel in this manner presents a higher degree of risk of accidents and could result in significant environmental effects should the integrity of the tanker be compromised by the surrounding ice. Fuel tankers are designed and licensed to transfer fuel, not necessarily to freeze-in for long-term bulk storage on/in water.” It is unclear what engineering risk assessment, if any, was the basis for EC’s comment regarding the higher risk due to freeze-in, since EC does not have expertise in either ice mechanics or vessel structural integrity. It would appear that the comment regarding the design and licensing of fuel tankers was not made in consultation with Transport Canada. The Transport Canada review of the case did not provide comments as to the design and licensing of fuel tankers, nor increased risk. In their final review of the plan, at the end of July, 2012, Transport Canada concluded that the proposed plan had the potential to meet all regulatory requirements for overwintering, if the proponents proceed using equivalencies for stationary vessels under the Canada Shipping Act and the Arctic Shipping Pollution Prevention Regulations (ASPPR) (Transport Canada, 2012). The final review decision with respect to overwintering has not yet been released.

## ***2.2 Draft Arctic Waters Guidelines for Lay-Up of Petroleum Barges in Landfast Ice***

In 2004, a draft set of guidelines was prepared for Transport Canada (Jones, 2004). The draft guidelines were provided as advice to mariners operating in the Arctic and were jointly developed by the Canadian Government and industry. However, these draft guidelines were not formally adopted as a Guideline or Standard by Transport Canada. Nevertheless, in the eight years since their creation, and in the absence of any other document available to those seeking to overwinter a vessel in ice-covered water, the draft guidelines have been used to help guide decision-making for the practice.

The draft guidelines outline general considerations (such as regulations, enforcement, emergencies, weather and ice and historical sites), types of vessels requiring Transport Canada approval for lay-up, vessel clearance and ice considerations, marine support requirements, monitoring and notification requirements.

Within the draft guidelines, there are numerous references to ice conditions, such as:

- Section 3.4 Vessels: “...only laid-up/stored in suitable land-fast ice conditions.”
- Section 3.6 Weather and local ice conditions: “...vital to ensure that land fast (non-pressured) ice conditions are assured throughout the lay-up period.”
- Section 4.2 Bottom Founded Drilling Units and Floater Drilling Units: “...Herschel Basin requires marine support for such units (floater drilling units) during freeze-up and break-up.”
- Section 5.0 Sea Room, Under Keel Clearance, Ice Incursions and Other Considerations: general discussion regarding the amount of area (sea room) available, the potential need for moorings, ice monitoring, ice growth against the hull, keel clearance and potential ice movement.

Necessarily, each overwintering case will be unique. Ice conditions will not be exactly the same, year to year, in any given location, and the nature of the vessel that is overwintering will play a large role in the type of ice conditions that the vessel can withstand. Clearly an exploration drilling platform or a polar-class icebreaker has been designed to withstand very different conditions from a single-hull barge. As such, the guidelines are also necessarily general in

nature, outlining basic considerations that should be accounted for, prior to overwintering a petroleum barge in landfast ice.

### ***2.3 Transport Canada Consultation Activities***

At the outset of this project, it was understood that good discussions with Transport Canada (TC) would be required, in order to ensure that the goals of this project did not repeat efforts already underway by TC. Upon the commencement of this project, discussions were initiated with Transport Canada to determine any potential overlap of effort. A series of teleconferences and one meeting in Winnipeg were held.

The authors were informed that a TC study concerning overwintering would primarily focus on an examination of the regulatory environment surrounding the practice of overwintering, a review of the practice (specific to barges), and a series of discussions to find out more about local concerns with respect to the practice. This information would be used to generate a discussion paper on this topic, a possible best practice guide and recommendations for the next steps as they pertain to regulations. As such, this NRC study fit well with the TC study, in that this study focuses instead on the role ice may play in damaging a vessel that is overwintering.

Additionally, the TC study specifically focused on the overwintering of fuel barges, anywhere in the north, while the present NRC study examines the potential ice loads that could be applied to any vessel as well as fuel barges, and is also primarily confined to the BREA area of interest. The discussions that follow in this study do, however, have applications to other areas of interest, such as Nunavut and more southerly locations such as Great Slave Lake.

Communication with TC included updates on the status of their own research progress, background information into existing regulations and upcoming requirements for double-hulled vessels operating in shipping Zone 12 (see ASPPR 1989), highlights from their discussions in Inuvik and Hay River with locals, and historical information on the practice of overwintering. Highlights from their discussions in the north, as they pertain to ice loads, will be described in the following section.

Regarding the Baffinland project described in Section 2.1, TC plans to formalize and publish their process for obtaining equivalencies under the ASPPR, to complete their review of fuel storage by barges in the Mackenzie River and complete work to revise standards for overwintering of fuel, including finalizing best practices for overwintering (Transport Canada, 2012). At the time of writing this report, neither the TC review paper nor the finalization of best practices for overwintering, as mentioned in Section 2.1, were available.

### ***2.4 Local Concerns***

The discussions that TC held in Hay River and Inuvik and a BREA Day in Inuvik highlighted some concerns brought forward by the individuals attending the meetings that pertain to this study. Only those that are specific to ice conditions will be discussed here.

The questions and concerns brought forward at the TC meetings and the BREA day include:

1. How much overwintering has occurred in the past and how much is presently occurring?
2. Where does overwintering occur in the north?
3. There were suggestions that guidelines/standards should include a list of proper overwintering sites.
4. Is the practice of overwintering done in the south as well?
5. What is the impact of ice and harsh winter conditions on the hull?

6. What is the impact of potentially more dynamic ice conditions during freeze-in and spring break-up, such as break-up of river ice?
7. Are single-hulled barges adequately strengthened for the practice of overwintering, and for potentially being in a dynamic ice environment?
8. Does the requirement of vessels in Shipping Zone 12 to be double-hulled adequately address the risks in dynamic ice conditions?
9. It is perceived that monitoring and inspection of barges throughout winter is infrequent/non-existent.
10. What are the monitoring procedures that should be followed for overwintering?

Questions 1 and 2 have been addressed in varying levels of detail, both in the Draft Guidelines (Jones, 2004) and the Connelly (2012) report described previously (see Appendix A). The frequency of overwintering occurrences, and the types of vessels that were overwintering (fuel barges or other), do not appear to be records that are kept by any particular territorial or national department, due in part to the current regulatory system for this practice.

The challenge with Question 3 is that a suitable location can potentially change depending upon the vessel that is to be overwintered. What is not suitable for a single-hulled barge may be fine for a double-hulled icebreaking tanker. Suitability is highly dependent upon the vessel type, and the conditions that the vessel was built to withstand. That being said, the draft overwintering guidelines (Jones, 2004) that were created did list locations that have been used in the past, which is something of a guideline, in that conditions at other locations that are not listed could be compared to those that have been used successfully in the past. However, just because no incident occurred at a particular overwintering location does not mean that that location is suitable for all vessels, and conditions may have changed at a site.

In general, overwintering of vessels, not specifically fuel-storage barges, does occur in many southern locations (question 4). The practice varies, from vessels moored at harbors where ice incursions may happen, to full over-wintering in landfast ice, generally in lake environments. There do not appear to be reporting requirements for overwintering of vessels, whether or not they are holding fuel, so the practice is difficult to track. Some instances of overwintering have been inferred from the databases mentioned previously. It is unlikely that there is much demand for the overwintering of fuel barges in southern locations of Canada.

Questions 5 and 6 will form the bulk of this report, and will be addressed in Sections 3 through 7.

Questions 7, 8, 9 and 10 are beyond the scope of this report; however the summary sections of this document will touch on them and provide some recommendations to address these questions. Regarding the upcoming requirement that vessels operating in shipping Zone 12 be double-hulled, this is a concern of local communities that was brought forward numerous times. The southern limitation to shipping Zone 12 is the boundary of part of the exemptions to the requirement that barges operating in the zone be double-hulled by 2015 (Transport Canada, 1995, or see this part of the reference online at <http://www.tc.gc.ca/eng/marinesafety/tp-tp11960-part-vii-140.htm>). Therefore, barges operating in the Mackenzie River, and most of Kugmallit Bay, are exempt.

In addition to the meeting described above, the authors also met with members of the Inuvialuit Joint Secretariat and the Inuvialuit Game Council in mid-April, 2012, in Inuvik. At this meeting, the conversation covered a number of topics. Concerns and comments brought forward, where different from previously-mentioned concerns, included:



1. Acknowledgement that recorded spills to date have been due to human error, not the structural integrity of a vessel in ice.
2. There is concern that the exclusion zones within new regulations for double-hulled vessels will allow for unsafe overwintering practices.
3. Overall, communities do not want single-hulled barges storing fuel by overwintering in ice. The concern regarding the practice is less for double-hulled vessels and structures designed for dynamic ice conditions, such as offshore drilling platforms.
4. There appear to be rules for fuel handling but not for fuel storage facilities on water. However, Transport Canada does not consider overwintering of fuel barges to be fuel handling.
5. It is believed that the lack of clarity regarding the practice of overwintering is to a certain extent due to the reluctance of the Federal government to call the practice fuel handling, as this would have implications for marinas and ports in southern Canada.
6. Given that the practice is not called fuel handling, there are different regulations for fuel storage on land and on water – there is a perceived lack of regulations and guidelines regarding the practice of storing fuel on water or in ice compared to an existing stringent set of regulations and guidelines for the practice on land.
7. It is perceived that the practice of overwintering in ice is a way around the permitting required to store fuel on land.
8. Due to the 2012 Federal budget cuts to many government departments, points of contact in the event of a spill, or for questions about the practice, seem to have either been completely cut, or existing contacts are in the limbo due to work force adjustment notifications or departmental reorganizations.
9. Federal regulatory authorities continue to appear to be “pointing fingers” at each other for responsibility, both for oversight of the practice of overwintering vessels in ice and for coordination in the event of a spill.
10. With respect to ice conditions in particular, there is concern that with changing climatological conditions, ice may become more dynamic leading to potentially greater interaction with vessels that may not be adequately designed for those conditions.
11. People would like to have reassurances that vessels are designed for the changing ice conditions that they are likely to encounter, which could be more or less risk compared to what it is presently.
12. Oversight regarding where overwintering can occur (site selection) appears to be lacking, accompanied with little consultation with local communities.
13. The location of Federal government-designated safe havens for vessels that are stranded outside of a preferred overwintering location is not clear. It is believed that the names of these locations should be publically available, so that communities can be made aware of the potential for such occurrences. It is also questioned if the selection of these safe havens took into account local ice conditions, in consultation with appropriate scientific authorities.
14. There is a concern about the break-up season, especially as it pertains to ice in the Mackenzie River and whether vessels have adequate moorings to deal with the forces involved.
15. General best practices with respect to overwintering, whether or not fuel is being stored, such as adequate and appropriate signage, warnings, reflectors, etc. are not clear.
16. Should offshore exploration activities proceed in the Beaufort Sea, there are some concerns regarding overwintering of numerous vessels (as was seen in the 1980’s and early 1990’s) and their associated site selection.

An example which summarizes some of the Inuvialuit concerns is included in Appendix B, a letter from Frank Pokiak, Chair of the Inuvialuit Game Council, sent to the Environmental Impact

Screening Committee (EISC). This letter outlines the overall concerns regarding regulatory authority, but also shows the concern regarding the ice conditions that may or may not be appropriate for overwintering of vessels and the process to determine what is safe.

### **3. ANALYSIS APPROACH**

In order to assess the damage potential that ice may have for an overwintering vessel, four locations and four loading conditions were chosen to provide guidance as to the types of load scenarios a vessel might encounter. This analysis approach allows for an illustrative overview of typical scenarios and an overview of typical calculation methods to determine those loads.

The locations chosen were a sheltered bay, a semi-sheltered bay, an exposed location, and a river environment. The sheltered bay is representative of a preferred overwintering location, while the semi-sheltered bay would be a secondary choice, or a safe haven. The exposed location was chosen to represent a case where, for example, weather closes in on a vessel and it is not possible to reach either a preferred location or a safe haven. The river environment is representative of both oil and gas and mining activities where fuel barges may overwinter in a channel of the Mackenzie River, for example.

The predominant environmental loading conditions, with respect to ice, for each site include:

- early winter freeze-in
- winter adfreeze and thickened ice
- late winter thermal loads
- spring break-up

These conditions, and methods of calculating expected ice loads, will be described in the following sections.

The calculations and discussion will focus on a barge rather than a more robust vessel such as a Beaufort Sea drillship. For the sake of the calculations, it will be assumed that the barge is rectangular in plan-view with a width of 15 m, an overall length of 60 m and a draft of 3 m. It will further be assumed that the bow and stern have sloping sides such that the overall length of the rectangular cross section is 50 m, with 5 m of slope in the bow and stern region. The long side of the barge is assumed to be vertical. A rigorous analysis of the environmental parameters used in the following examples was not performed. Rather, representative values for the regions of interest are used to illustrate the ice loading potential in each scenario.

## 4. SHELTERED BAY

A barge moored in a sheltered bay is the first scenario that will be discussed. McKinley Bay is a good example of this type of situation. Here, the ice is largely static with no dynamics or direct exposure from the Beaufort Sea.

The life cycle of the ice regime for this situation is fairly straightforward. In the autumn during **freeze-up**, there would be some (thin) moving ice. During **winter**, the ice would be static and in general, the ice sheet would be very level. In the **spring** break-up, the ice would still be largely static and melt in place. The following sections deal with each of these three seasons with respect to a frozen-in barge.

### 4.1 Freeze-up

During the autumn season as the temperature drops, the ice in the bay would begin to freeze. Depending upon the wind speed, the ice could have limited or no movement. Because the bay is largely sheltered, the fetch area for developing a driving force to move the ice is limited. This means that the ice would likely freeze as level ice or with some light ridging. The authors visited McKinley Bay in April, 2012 and observed that this was indeed the case for this region. There is a small shoal in the middle of the bay that was built as a result of the dredging in the 1980s to dig a deep channel for vessel access to the bay. The authors observed a very small rubble pile on the East edge of the shoal about 100 m from the edge. Figure 7 shows a photo of this pile-up. The rest of the ice was very flat.



**Figure 7: Photograph showing the small rubble feature about 100 m from the east edge of the shoal in McKinley Bay.**

The ice in this pile-up was approximately 0.15 m thick, thus indicating the early season movement of the ice. A moving ice sheet interacting with a barge or vessel would exert a force on it. To estimate this force, two different approaches are used. The first approach examines the

available driving force on the ice cover. The second approach examines the force necessary to cause ice failure. The lower of the two is the force that would be exerted on the barge.

The wind driving force can be determined from

$$F_D = \rho C_D v^2 A^2$$

where  $F_D$  is the force due to wind drag,  $\rho$  is the air density,  $C_D$  is a drag coefficient,  $v$  is the wind speed and  $A$  is the fetch area over which the wind acts. Assuming an air density of  $1.5 \text{ kg/m}^3$ , drag coefficient of .003 (Macklin, 1983), wind speed of 15 m/s and fetch area of 5 km, the driving force would be 25 MN.

To estimate the force required to fail the ice against the barge, the equations developed by Timco and Johnston (2004) can be used. They showed that for ice loading on the caisson structures in the Beaufort Sea, the global force is given by:

$$L_{gl} = T_{fm} w h$$

where the  $L_{gl}$  is the global force (in MN) on the structure,  $w$  is the width (in m) of the structure and  $h$  is the ice thickness (in m).  $T_{fm}$  is a failure-mode parameter with the following values

$$\begin{aligned} T_{fm} &= 1.09 \text{ MN/m}^2 \text{ for ice crushing} \\ &= 0.83 \text{ MN/m}^2 \text{ for long-term creep (i.e. thermally-induced creep)} \\ &= 0.63 \text{ MN/m}^2 \text{ for mixed-mode failure} \\ &= 0.18 \text{ MN/m}^2 \text{ for bending failures.} \end{aligned}$$

For this thin ice, it likely would fail in bending so the estimated force on the long side of the barge would be  $0.18 \times 50 \times 0.15 = 1.4 \text{ MN}$ . This is lower than the driving force of 25 MN so this failure process would limit the load to this value. Thus, the line load (i.e. total load per unit width) would be  $0.028 \text{ MN/m}$  width for this  $0.15 \text{ m}$  thick ice. The ice pile that the authors observed in McKinley Bay did not show any indication that ice crushing had occurred.

## 4.2 Winter Season

As the winter progresses with colder temperatures, there are two considerations for barges frozen into ice in a sheltered bay. Adfreeze and thickened ice is one factor. Thermal ice loads is a second factor to consider. Each will be discussed below.

### 4.2.1 Adfreeze and Thickened ice

During the winter season in the Beaufort region, the level first-year sea ice grows to a thickness of typically  $1.9 \text{ m}$  (Melling et al., 2005). A steel barge frozen into this ice will have a layer of ice significantly thicker than this along its sides. Steel is an excellent thermal conductor and this heat transfer mechanism will result in thicker ice. In some cases, the ice could extend along the full depth of the barge. Since the ice would be solidly frozen onto the steel, it is termed Adfreeze ice. Note that a snow cover will not limit this added ice growth in thickness but it will limit its lateral extent. This additional thickness for a barge in a sheltered bay should not cause any issues with respect to the structural integrity of the barge. It is noted solely to illustrate that the ice will be thicker at the barge-ice interface.

Adfreeze ice can be a problem in certain situations. For example, ice adfrozen to a fixed (bottom mounted) structure in a high tidal range would exert vertical forces on the structure. For a floating

barge, this would not be the case since the barge would move with the ice (limited only by the range of the mooring lines). Adfreeze can also cause problems during an ice movement event, or in a non-sheltered location, since the ice must break the bond with the steel plates. This can cause high loads since the adfrozen ice is in perfect contact with the structure. For a sheltered bay, horizontal movement of the ice would only occur in the spring. At that time of the year, the bond between the ice and steel would be quite weak since the sun would warm the steel and this would reduce the adfreeze strength to it. Thus, the influence of adfreeze ice would be reduced and would not likely be an issue for a floating frozen-in barge in a sheltered bay.

The authors examined the Caisson-Retained Island (CRI) which was a steel caisson used by Imperial Oil in the 1980s for exploratory drilling in the Beaufort Sea. It is now located in Tuktoyaktuk harbour. The site visit showed that the upper surface of the ice was quite smooth and did not extend up the face of the structure (see Figure 8). There was some snow pile-up there as evidenced in the figure, but this had no structural strength. There was no sign of any ice-induced damage to this structure. The authors did not drill to determine the thickness of the ice surrounding this structure. Measurements of ice thickness here would not be representative of the ice thickening around a barge since the CRI has highly-sloping sides (30° from the vertical). One interesting item to note is the existence of large cracks in the vicinity of the structure. The crack shown in Figure 9 was approximately 4 cm to 8 cm wide and ran parallel to the structure. It was snow-covered and not visible to the naked eye. These types of cracks, which are likely caused by slight tidal action, do not affect the stress levels on a structure or frozen-in barge during the winter months.



**Figure 8: Photograph showing the ice around the perimeter of the CRI in Tuktoyaktuk harbour.**





**Figure 9: Photograph showing the crack in the ice in the vicinity of the CRI.**

It is also of interest to note that there have been reported incidents of ice forming along the underside of vessels in cold water environments. Typically this is caused if there are empty cargo holds that are open to the outside (cold) air. In this case, the cold air can settle to the bottom of the hold and cause ice to form on the underside of the vessel. This should not be a problem for a barge except if the ice freezes to the seabed. Because of this, there should always be adequate clearance under the barge to ensure that any possible ice formation does not contact the seabed. Unfortunately there are few reported direct measurements of typical thickness of this under-vessel ice, although the draft guidelines (Jones, 2004) do mention measurements of 0.7 to 1.2 m. Clearly, however it would be a function of the available air infiltration into the lower levels of the vessel. For barges, this likely would be quite limited. As indicated in the draft guidelines, the guidance provided indicated that the clearance should be 20-25% of the vessel draft (Jones, 2004). Aside from the forces on the barge, a vessel that is frozen to the seabed can also be subjected to flooding due to any significant change in water level.

As noted, however, if ice adfreeze occurs below the barge, this can cause problems if the ice contacts the seabed. This could result either from insufficient draft or tidal action. In that case, the barge could be unstable and it could tilt. One such example was reported in the literature, and was also reported in the GNWT Hazardous Materials Spills database, as previously mentioned. Robert Eno, the Government of Nunavut's manager of pollution control, reported in the Nunatsiaq News (2008) that in 2000 at Iqaluit: *"Ice froze beneath the barge over the winter. Then, in the spring, the ice melted unevenly, causing the barge to tip to one side, allowing ice to cut through the hull."* The NWT spill report that was provided to the authors about this event does not contain further details regarding how the ice punctured the hull (GWT ENR spill report 00-193). This spill was detected early, due to regular drilling in the ice to inspect the water beneath (Nunatsiaq News, 2008).

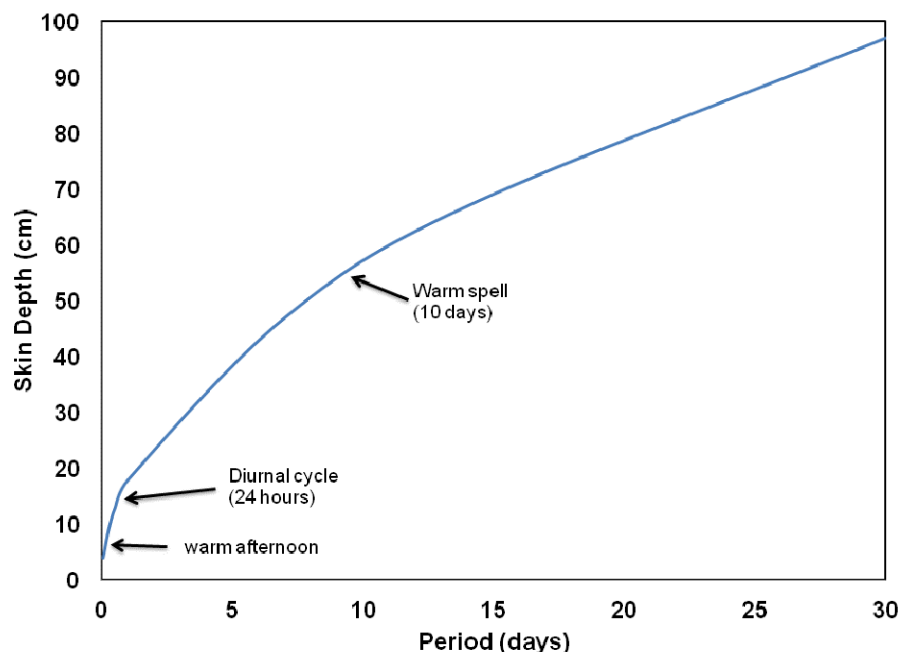
#### 4.2.2 Thermal loads

Changes in air temperature will result in stresses on a structure or barge frozen into the ice. During the winter months, there are continual temperature fluctuations with periods of typically

six hours (warm afternoon), to 24 hours (diurnal variation), to 10 days (warm spell). These changes in air temperature will induce changes in the ice temperature and this, in turn, will result in an expansion or contraction of the ice sheet. This resultant change will exert a force on the structure or barge. The question is: what is the magnitude of these stresses? This section will examine these thermally-induced loads.

The first aspect to consider is the rate of change of ice temperature with a change in air temperature. A change in air temperature will not produce an immediate change in ice temperature. Moreover the change in ice temperature will not be uniform with depth. Air temperature fluctuations mainly influence the top portion of the ice sheet. The bottom temperature will always remain at approximately  $-1.8^{\circ}\text{C}$ . Sanderson (1988) has discussed this aspect and has shown that the temperature changes with ice depth propagate downwards according to the Fourier theory of heat conduction. He shows that rapid fluctuations in temperature are attenuated more quickly than slower ones. Figure 10 shows a plot of the depth of penetration of thermal surface waves through an ice cover. The “skin depth” (depth at which the wave is attenuated to  $1/e$  of its surface amplitude) is shown as a function of the wave period. The figure shows that even a long 10-day warming period only influences the upper one-half meter of the ice. Ice deeper than this is not affected by the fluctuating air temperature. This was confirmed in an experimental study by Timco and Sayed (1993).

This is a very significant fact to note. Thicker ice does not necessarily mean that higher thermal loads will be generated on the structure or barge. Also, a snow cover will help to attenuate the air temperature changes, so a thick snow cover will help to reduce thermal loads.



**Figure 10: Graph showing the skin depth versus period for a thermal wave to penetrate into an ice sheet.**

Over the years, there have been a large number of theories developed to predict thermal loads. These have largely been developed for estimating loads on hydroelectric dams and as such, they are applicable to more temperate climates. Timco et al. (1996) compared a large number of these



theories with direct measurements made on a number of hydroelectric dams in the Ottawa region. They found that none of the theories adequately predicted the loads. Because of this, they will not be used to predict thermal loads in this study. However, for completeness, they are outlined in Appendix C along with some representative sample calculations.

The question is – how can the thermal loads be estimated for this study? Sanderson (1984) outlines an approach that can be used based on the basic physics of the situation. It is outlined below.

The linear thermal expansion coefficient  $\alpha_L$  is defined as the fractional change in length per degree of temperature change. Thus it is given by

$$\alpha_L = \frac{1}{L} \frac{dL}{dT}$$

where  $L$  is the length of ice (in this case from the shore to the structure or barge),  $dL/dT$  is the rate of change in length with temperature. For the present purpose, this can be approximated as:

$$\alpha_L = \frac{1}{L} \frac{\Delta L}{\Delta T}$$

where  $\Delta L$  is the change in length and  $\Delta T$  is the change in temperature. Thus

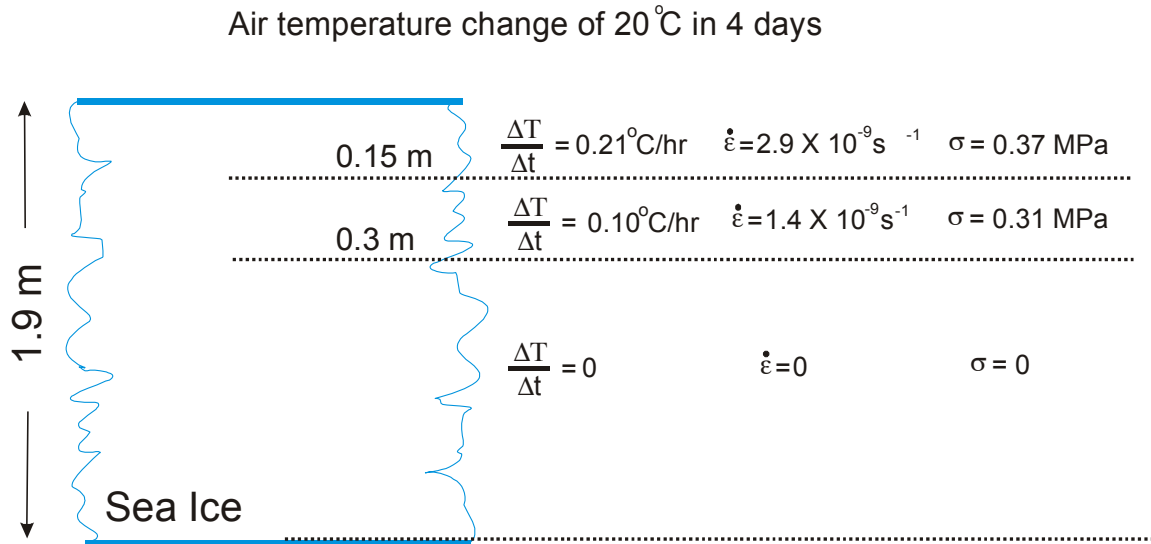
$$\frac{\Delta L}{L} = \alpha_L \Delta T = \epsilon$$

where  $\epsilon$  is the strain in the ice. From this, the strain rate in the ice sheet can be determined as:

$$\dot{\epsilon} = \alpha_L \frac{\Delta T}{\Delta t}$$

where  $\Delta t$  is the change in time. Therefore the strain rate in the ice can be determined from knowing the change in temperature with time. As discussed above, this will not be uniform with depth.

It is possible to use this approach to estimate the thermal loads on a barge with a change in temperature. For a sample calculation, it is assumed that the change in air temperature with time is 20°C over a 4 day period (i.e. a warm spell). This temperature change would not propagate through the ice sheet as discussed above. Therefore it will be assumed that this temperature change only affects the upper 0.3 m of the ice sheet (see Figure 10). For this calculation the temperature gradient will be simplified, with a rate of 0.21°C/hr in the upper 0.15 m (i.e. the same rate as the air temperature change) and half that in the next 0.15 m. Below that, there is no temperature change so the rate is zero. Figure 11 illustrates the assumptions and values used in this calculation. The figure illustrates the representative  $\Delta T/\Delta t$  values and the corresponding strain rate (in  $s^{-1}$ ). A value of  $50 \times 10^{-6} / ^\circ C$  has been used for the linear thermal expansion coefficient (Johnson and Metzner, 1990).



**Figure 11: Schematic illustration of the temperature change, strain rate and stress in an ice sheet for the example discussed in the text.**

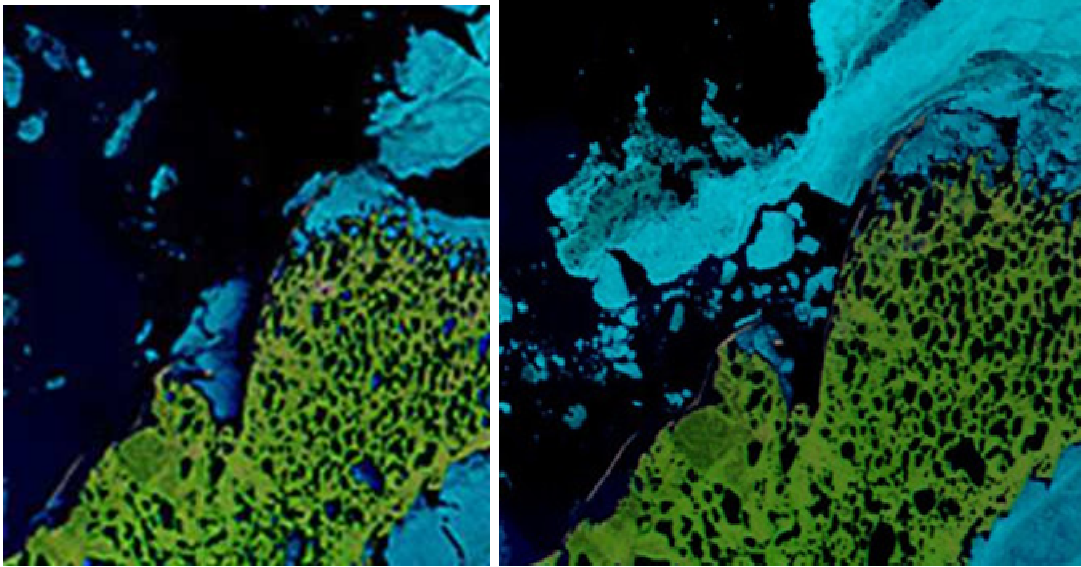
It is now necessary to assume that the ice is effectively constrained between the barge and the shore line and the ice will strain at the rates calculated in Figure 11. It is then possible to use an appropriate constitutive equation to calculate the stress in each of the levels of the ice sheet. Timco and Frederking (1990) have developed constitutive relationships for sea ice which relates the stress to the strain rate. For this example, it is assumed that the ice salinity is 5 parts per thousand and the average temperature in the ice sheet is -20°C. Then, the stress in the upper 0.15 m of the ice sheet is determined to be 0.37 MPa and 0.31 MPa in the next 0.15 m (i.e. between 0.15 and 0.3 m depth). Below 0.3 m, the stress is zero. Integrating these stress values with depth yields a thermal line load of 0.10 MN/m barge width<sup>1</sup> for this ice thickness. Note that this ice loading would arise along all sides of the barge so the ice would be “squeezing” the barge. Thus it would not displace it.

It should be noted that the loads on the bow and stern would be less than this since the sloping sides will reduce the loads. It is also of interest to note that if the shoreline in the bay has a gentle slope, the thermal expansion could take place through a movement up the slope. This also would reduce the loads.

### 4.3 Spring Break-up

In the spring, the ice will begin to deteriorate as the temperature rises. This will cause a reduction in the strength of the ice and a thinning of the ice sheet. In a sheltered basin, the ice will likely deteriorate in place with very little dynamics (Figure 12). During this time, a structure or barge would experience thermal loads with a magnitude similar to that discussed above. The steel plating of the barge will warm faster than the surrounding ice sheet and this will likely cause the adfreeze bond between the barge and ice to break (i.e. the barge will not be frozen to the ice sheet). For a sheltered location, there are no significant ice actions other than those discussed above.

<sup>1</sup> This thermal load value is in agreement with field-measured values in temperate regions which range from 0.044 MN/m to 0.146 MN/m (Gatto, 1984). It is also in agreement with the ISO 19906 Arctic Offshore Structures code (ISO 19906, 2010), which indicates that values between 0.15 and 0.3 MN/m can be used for offshore structures, regardless of ice thickness.



**Figure 12: Two MODIS images showing McKinley Bay in late spring, showing the non-dynamic nature of the break-up of the ice. On the left, from June 25, 2008, the ice is in the process of melting in the bay, while most of the landfast ice out of the bay has already been dynamically removed from the area. On the right, from June 27, 2011, the outer bay is still protected by landfast ice while the ice in the bay is melting in place. MODIS images: Terra satellite, Bands 7-2-1 colouring.**

## 5. SEMI-SHELTERED BAY

Often it is not possible to moor a barge in a fully sheltered bay. There are a number of semi-sheltered bays in the Beaufort region. These bays are in landfast ice during the winter months but could be exposed to more dynamic ice conditions for part of the year. The bay in the southwest region of Herschel Island is a good example of a semi-sheltered bay. It is protected from northerly ice intrusions but is open to drift ice from the east and the south. Although this ice would not be as severe as the northern pack ice, it still could present more dynamic conditions than a sheltered bay. The following sections deal with each of the three seasons with respect to a frozen-in barge in a semi-sheltered bay.

### 5.1 Freeze-up

The freeze-up would likely progress in the same manner as that for a sheltered bay except that there could be more dynamic ice, which lasts longer into the autumn months. The amount of dynamics and duration would vary for different bays. There also would be an annual variability of the freeze-up date. A semi-sheltered bay such as that used at Herschel Island is ideal since it offers protection from the prevailing northerly winds and drifting pack ice. A semi-sheltered bay which is more exposed to the drifting pack ice would not be as effective for over-wintering a barge. Thus, protection from the prevailing direction of moving ice, especially during storms, is an important consideration in site selection. Since the bay is not fully sheltered, some ice dynamics could take place in the freeze-up months.

If the barge is sheltered from the more severe ice pack ice conditions, then it would only have to contend with moving ice which formed in the bay (or in the delta region, in this case). Ice begins to form in these bays in late September and by the end of October the ice can be landfast. Typical ice thickness at that time could be on the order of 0.3 m. Similar to the freeze-up in the sheltered bay, the Timco and Johnston (2004) equations can be used to estimate the ice loads. For this ice thickness, the ice failure would likely be mixed mode but heavily predominated by ice bending failures. Estimated loads on a 50 m wide vertical side of a barge could be  $(0.18 \times 50 \times 0.3) = 2.7$  MN. Thus, the line loads during the freeze-up season in a semi-sheltered bay could be on the order of 0.054 MN/m width for this 0.3 m ice thickness.

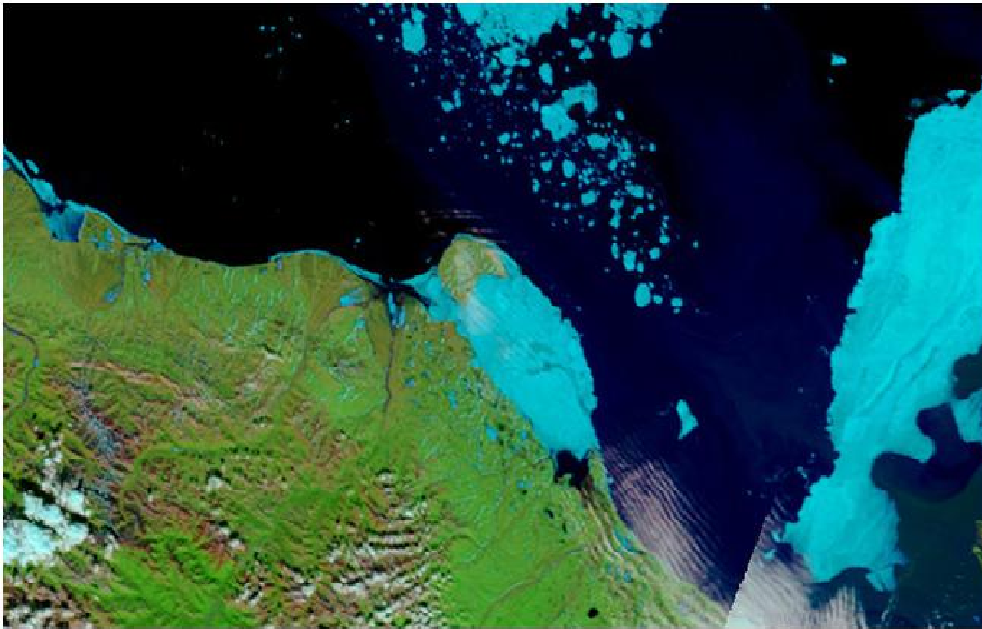
### 5.2 Winter Season

As the winter progresses, the same ice factors of adfreeze and thermal loads as discussed for the sheltered bay would be present. There would be no difference with respect to ice actions or ice loads. Thus estimates of the loads from thermal origin would be on the order of 0.10 MN/m barge width for a semi-sheltered bay.

### 5.3 Spring Break-up

In the spring, the ice will deteriorate with a reduction in strength and thinner ice. If the ice melts in place, then the loads (largely thermal loads) would be the same as that for the sheltered bay. However, in a semi-sheltered bay, there could be more dynamic ice during the break-up period. This could lead to higher loads on the barge. As an example, Figure 13 and Figure 14 show MODIS satellite images in the region around Herschel Island in 2009. The first figure shows the ice conditions on June 18. At that time, the ice was clearing around the north, west and eastern regions of the island. Note that the southern region still contains ice. An examination of MODIS images from 2007 to 2011 shows that this break-up of the ice occurred from June 19 to June 30. Figure 14 shows the ice on June 29, eleven days later. Here the ice in the bay has begun to break apart and move out of the region. Analysis of MODIS images from 2007 to 2011 indicates that

this occurred from June 25 to July 10. During that time, the ice would be dynamic and this would impose a load on a moored vessel in this region.



**Figure 13: MODIS satellite image showing the break-up of ice in the region around Herschel Island. Note that the ice south of the island is still landfast. Image from June 18, 2009, Terra satellite, Bands 7-2-1 colouring.**



**Figure 14: MODIS satellite image showing the break-up of ice in the bay around Herschel Island. This break-out of ice presents a moving ice situation which will exert ice loads on a moored vessel. Image from June 29, 2009, Terra satellite, Bands 7-2-1 colouring.**

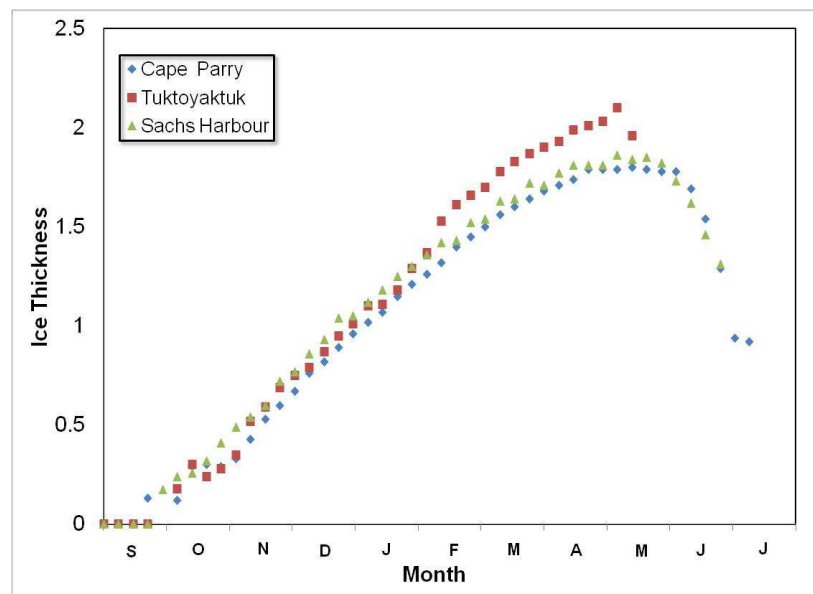
The ice thickness must be known to estimate the loads. Figure 15 shows a plot of the mean ice thickness at different times of the year in the Beaufort Sea region. Data was obtained from Environment Canada for Sachs Harbour, Cape Perry and Tuktoyaktuk. Information on the Herschel Island region was not available. The figure shows the ice beginning to form in late September and reaching a maximum in early May. At the end of June and early July when the ice begins to move from the Herschel Island region, typical ice thickness would be on the order of 1 m thick. However, ice floes moving in a semi-sheltered bay would have limited energy. Therefore it is necessary to calculate both the limit stress and the limit energy loads. The lowest one would govern the loading situation.

For the limit stress, the Timco and Johnston (2004) equations can be used. In this case, the ice could fail either with crushing or with mixed mode. Thus, using the equations would yield loads from 32 to 55 MN for 1 m thick ice loading along the long side of the barge.

To estimate the loads for limit energy, it is possible to use the approach developed by Timco (2011) for estimating loads due to the impact of isolated ice floes. In that approach, a large number of floe impacts were analyzed for a wide range of impact situations and found that there was a good correlation between the impact force (F) and the floe kinetic energy (E) at impact with a functional form

$$F = A E^{0.532}$$

where F is in MN and E is in GJ. The coefficient A was determined to be 61.7 for the “likely” impact force and 388 for the upper-limit impact force (i.e. when crushing occurs). For the present scenario it is assumed that the floe size diameters are on the order of 10 km wide with an ice thickness of 1 m moving at a rate of 0.2 m/s. Using the Timco (2011) approach yields a floe impact forces in the range of 0.8 MN to 5 MN depending upon the failure mode of the ice at impact. Since the limit energy load is lower than the limit stress load, it would govern the load on the barge. Note that in contrast to the limit stress approach, this impact force does not depend upon the geometric dimensions of the barge.



**Figure 15: Graph of the mean ice thickness for different regions of the Beaufort Sea.**



## 6. NON-SHELTERED REGION

This section deals with the situation of a barge that has not been overwintered in a protected environment. Clearly this should not be a planned event. However it is covered here as a reminder of the type of ice loads that can be experienced if the barge is not sheltered. This situation may occur, for example, if the winter freeze-up takes place before the barge could be safely towed to its planned mooring location in a bay, or if problems arise with the towing vessel preventing it from keeping on schedule. The following sections deal with each of the three seasons with respect to a frozen-in barge in a non-sheltered region.

As a hypothetical example for discussion and analysis purposes, it will be assumed that a barge that was destined for DeSalis Bay on the south east side of Banks Island was prevented from reaching this location. Instead it was trapped in early winter ice at the southern tip of Banks Island in the region of Nelson Head (see Figure 16) in Amundsen Gulf.

It should be noted that this scenario region has been chosen strictly as an example. This example exercise outlines approaches that could be used to evaluate loads in other potential regions.



**Figure 16: Map showing the location of the hypothetical mooring location at Nelson Head at the southern tip of Banks Island (background image from Natural Resources Canada, De Salis Bay Map 97H 1:250 000, 2<sup>nd</sup> Edition).**

### 6.1 Freeze-up

In a non-sheltered region, the ice can be very dynamic during the freeze-up process. The thickness of the ice when the ice becomes landfast will determine the highest loads during this time period. For the present example scenario, an analysis of available MODIS images shows that the ice can still be quite dynamic well into November (see Figure 17). MODIS satellite images are not available later in the calendar year due to lack of available light. Analysis of the Canadian Ice Service (CIS) Ice Charts indicated that the ice in this region is rarely landfast but in some years it can become landfast approximately in early December. Using the information in Figure 15 indicates that the level sea ice would be on the order of 0.7 m thick at that time. Then

using the equations of Timco and Johnston (2004), the estimated load would be 76 MN. Here, it is assumed that ice crushing along the barge would take place. Thus, the line load could be 1.52 MN/m during the freeze-up in a non-sheltered region. The assumption of an ice crushing failure mode is reasonable since the floes would be large and quite dynamic. Loads due to ice ridges are not considered but they would be lower than those from crushing of level ice since the consolidated layer in the ridge would not be thick at that time of year.

It should be noted that the global load of 76 MN would far exceed the mooring line capacity of any moored barge. For example, the mooring line capability of the ice-strengthened drilling platform “Kulluk” was on the order of 750 tonnes (7.5 MN) (Wright et al., 1998). Thus the barge would be moved off site due to the moving pack ice.



**Figure 17: MODIS image showing the southern tip of Banks Island on November 2, 2011. Note the loose ice floes to the east of Island in the region of Nelson Head. Terra satellite, Bands 7-2-1 colouring.**

## **6.2 Winter Season**

If the barge was moored close enough to shore to be frozen into the thin strip of landfast ice, it would experience thermal loads during the winter months. The same ice factors of adfreeze and thermal loads as discussed for the sheltered bay would be present. There would be no difference with respect to ice actions or ice loads. Thus estimates of the loads from thermal origin would be on the order of 0.10 MN/m barge width for a non-sheltered region in landfast ice.

However, if the initial strip of landfast ice was subjected to ice movement periodically throughout the winter, as it often observed at this location, adfreeze break-out forces could be relevant. Adhesion strength will depend upon strain rate, brine volume, ice thickness, ice temperature and the type of surface to which is ice is adhered.

In addition, as the landfast ice edge would be relatively close to the vessel in this case, the vessel could be subjected to ice creep bucking loads. These loads would form if there was sufficient driving force acting on the ice edge to effectively push the solid landfast ice cover towards the shore (and hence the overwintering vessel). Figure 18 shows an example of this of ice failure process. This type of load event was documented, for example, at the Steel Drilling Caisson



(SDC) drilling location at Paktoa-C60 in 2006 (Sudom and Timco, 2008). In that paper, the authors describe an event where landfast ice, 1 m thick, moved up to 1.15 m overnight during a storm. A number of approaches were used estimate the associated load on the SDC, with predicted line loads ranging up to approximately 1 MN/m.

In this scenario, the Timco and Johnston (2004) equations could be used to calculate the load with a long-term creep failure mode parameter ( $0.83 \text{ MN/m}^2$ ). For an event occurring in mid-February, with an ice thickness of 1.5 m, this equation gives a global load of 62 MN ( $0.83 \times 50 \times 1.5$ ), or a line-load of 1.2 MN/m.



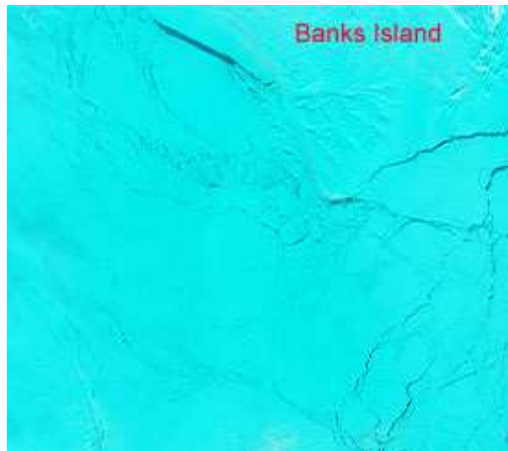
**Figure 18: Photograph showing an ice buckle at the SDC drilling platform at the Paktoa C-60 drill site.**

### **6.3 Spring Break-up**

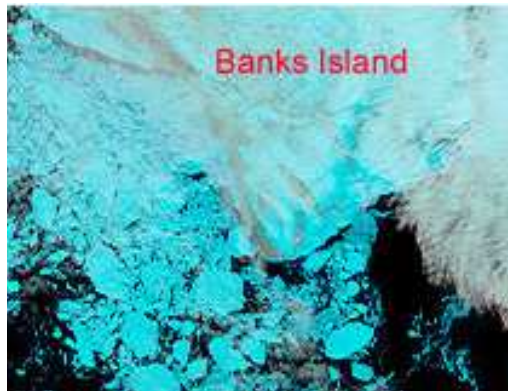
Since spring break-up dynamics are very dependent upon the location in the Beaufort Sea, it would be necessary to do a calculation based on the specific location of the moored barge. However as mentioned in the introduction to this section, this scenario should be avoided since the loads would be quite high. For the present purposes, the analysis will be done for the Nelson Head region. Figure 19 shows a series of MODIS satellite images of this region during spring of 2010. Three images are shown – April 9, May 30 and June 22. The images illustrate that the ice has begun to break-up and move in this region in early April and by the end of June, there is very little ice left in this region. Clearly the break-up is quite dynamic with large floes. Pieces of multi-year ice may also be present. For the present analysis, the Timco and Johnston (2004) equations can be used. Based on the thickness information given in Figure 15, the barge could experience ice on the order of 1.8 to 2 m thick in April and May. The ice could crush against the barge so the calculated load from first-year level ice would be approximately 220 MN. This would give a line load of 4.4 MN/m barge width. This load would be higher than the mooring line capability so the barge would likely be swept away with the moving ice. Note that more

extreme ice features (rubble fields or multi-year ice) would exert even higher loads. However they are not considered here since the loads from the first-year level sea ice would exceed the mooring line capacity.

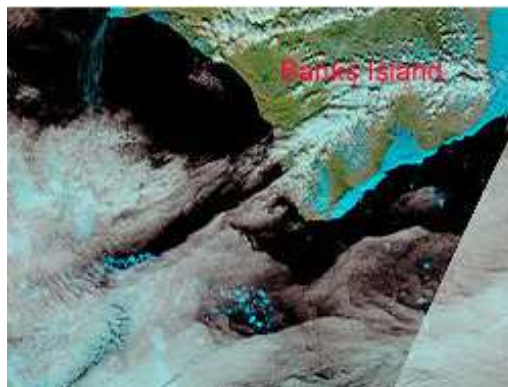
This analysis emphatically shows that mooring in a region with little or no sheltering should be absolutely avoided.



April 9, 2010



May 30, 2010



June 22, 2010

**Figure 19: MODIS satellite images showing the progressive break-up in the region south of Banks Island. Terra satellite, Bands 7-2-1 colouring.**

## 7. RIVER ICE

Mooring of barges in the Mackenzie River will not be dealt with in detail in this report. As previously mentioned, the focus here is on the offshore region. However the lessons learned from the previous analysis are applicable to mooring of barges in the river.

Some of the salient points include:

- Mooring in a fully-sheltered bay of the river would give the lowest ice loads and maximum available protection for the barge;
- The ice loads during the freeze-up would depend upon the dynamics of the ice in the region where the barge is moored;
- All barges mooring in the river would be subjected to thermal ice loads during the winter and spring break-up period;
- The thermal loads would be restricted to the upper part of the ice sheet since the thermal waves would not propagate deep into the ice sheet. Note that the thermal loads could be higher than for the offshore region since freshwater river ice is stronger than sea ice;
- The ice loads in the spring would depend on the degree of sheltering of the barge and the dynamics of the ice in the region;
- A barge that is caught in moving ice could be subjected to very high ice loads depending upon the dynamics of the ice. Studies of the Mackenzie River breakup (see e.g. Beltaos et al, 2012) clearly demonstrate the variability of the break-up in different parts of the river, and the potential for quite dynamic ice conditions. Figure 20 shows an example of the river ice near Inuvik in late May, 2008 (from Beltaos et al., 2012).
- Break-up of river ice in many rivers also involves significantly higher water levels compared to winter flow levels. If a vessel were to break free of its mooring lines due to the change in water levels or due to ice forces on the lines, the vessel would be transported by the ice downstream. If this happened, the vessel could ground, be subjected to pressured ice conditions should an ice jam occur, and have ice pile-up onto it.



**Figure 20: Surface ice jam: East Channel near Inuvik, May 27, 2008; looking towards the left bank (from Beltaos et al. 2012).**

## 8. KEY CONSIDERATIONS FOR OVERWINTERING OF VESSELS IN ICE

Key considerations when selecting a site for the overwintering of a vessel have been pulled from the previous sections, and are summarized in Table 2. Loads are summarized in Table 3.

**Table 2: Summary of key ice loading considerations for each location and environmental scenario**

<b>Location Scenario</b>	<b>Sheltered Bay</b>	<b>Semi-Sheltered Bay</b>	<b>Exposed Offshore</b>	<b>River Environment</b>
<b>Freeze-Up</b>	Because the bay is largely sheltered, the fetch area for developing a driving force to move the ice is limited. This means that the ice would likely freeze as level ice or with some light ridging.	Protection from the prevailing direction of moving ice, especially during storms, is an important consideration in site selection.	Ice can be very dynamic during the freeze-up process. The highest loads will likely occur just before the ice becomes landfast. Global loads from dynamic ice would likely exceed typical mooring line capacity.	Freeze-up loads will depend upon river ice dynamics at the mooring location, just before freeze-up.
<b>Winter</b>	<p>Adfreeze: Not likely an issue, providing adequate clearance under keel.</p> <p>Thermal: Only the upper one-half meter of the ice is influenced by thermal loading. Thicker ice does not necessarily mean that higher thermal loads will be generated on the structure or barge. A snow cover will help to attenuate air temperature changes, so a thick snow cover will help to reduce thermal loads. If the shoreline in the bay has a gentle slope, the thermal expansion could take place through a movement up the slope. This also would reduce the loads.</p>	<p>Adfreeze: Not likely an issue, providing adequate clearance under keel.</p> <p>Thermal: As with the sheltered bay, only the upper one-half meter of the ice is influenced by thermal loading. Thicker ice does not necessarily mean that higher thermal loads will be generated on a structure or barge. Also as with the sheltered bay, a snow cover will help to attenuate air temperature changes, so a thick snow cover will help to reduce thermal loads.</p>	<p>Adfreeze: Not likely an issue, if in landfast ice and adequate clearance under keel. Otherwise, could have break-out forces.</p> <p>Thermal: If the barge was moored close enough to shore to be frozen into the thin strip of landfast ice, it would experience thermal loads during the winter months, similar to the previous scenarios.</p> <p>Creep buckling: If the landfast ice edge is relatively near to the vessel, the vessel could be subjected to creep buckling ice loads.</p>	<p>Adfreeze: Not likely an issue, providing adequate clearance under keel.</p> <p>Thermal: As with previous locations, thermal loading will be a consideration. Thermal loads could be higher than in the offshore, as freshwater river ice is stronger than sea ice.</p>
<b>Break-Up</b>	Ice will likely deteriorate in place with very little dynamics and with thermal loading being the dominant loading scenario.	If the ice melts in place, then the loads (largely thermal) would be the same as the sheltered bay. However in a semi-sheltered bay, there could be more dynamic ice. This could lead to higher loads on a vessel or barge, but driving force is probably limited by size of bay.	Highly dependent upon overwintering location. Scenario should be avoided since the loads would be quite high at this time of year.	Break-up loads will be dependent upon ice dynamics at mooring location and water level rise. A barge caught in moving ice could be subjected to high loads, including pressured ice conditions (ice jams). Ice pile-up and grounding could also occur.

**Table 3: Comparison of illustrative scenario line loads developed in this report (values in MN/m width unless otherwise indicated). Type of loading indicated in parentheses. See the main report for details on associated ice thicknesses.**

	<b>Sheltered Bay</b>	<b>Semi-Sheltered Bay</b>	<b>Exposed Offshore</b>	<b>River Environment</b>
<b>Freeze-Up</b>	0.028 (bending)	0.054 (bending)	1.52 (crushing)	Location dependent
<b>Winter</b>	0.10 (thermal)	0.10 (thermal)	0.10 (thermal) 1.2 (creep buckling)	0.10 or slightly higher (thermal)
<b>Break-Up</b>	0.10 (thermal)	0.10 (thermal) Up to 5 MN (dynamic impact)	4.4 (dynamic, crushing)	Location dependent

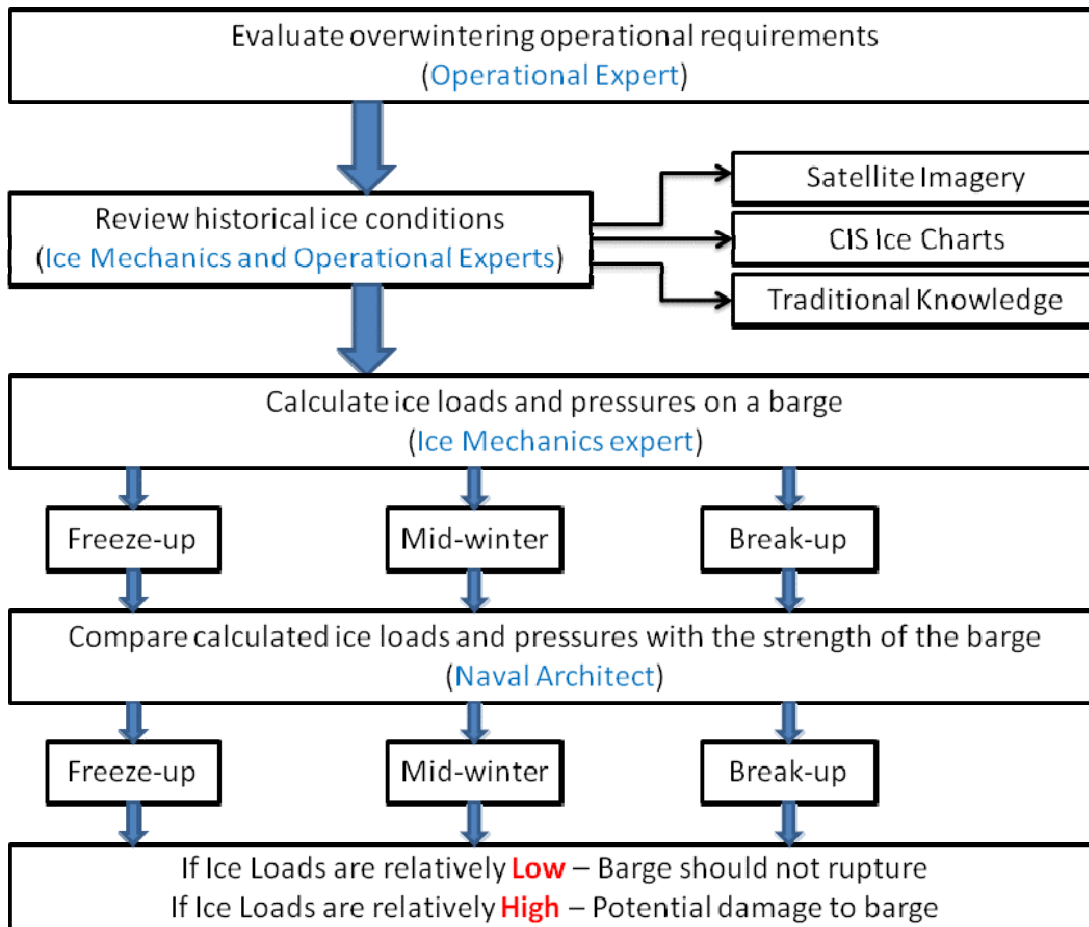
From Table 2 and Table 3, it is clear that the likelihood of damage is greater with either an exposed overwintering location and/or during any dynamic spring break-up events. Ice loads during the spring are more likely to have the potential to cause damage compared to the freeze-up period or due to thermal or adfreeze loading conditions. A detailed analysis of dynamic ice load scenarios for a particular location would likely show that mooring line breakage would occur initially, followed by potential crushing of ice against a vessel hull. If mooring lines broke, then depending upon the location of the overwintering vessel, once the vessel was mobile with the moving pack ice, it could potentially become grounded or freely drifting with the pack ice, and subject to any pressured ice conditions and associated ice pile-up events that could occur.



## 9. RECOMMENDATIONS

Companies or government organizations that are planning overwintering of vessels in ice will largely have procedures, guidelines and some degree of regulations to follow prior to placing a vessel in a location to overwinter. As previously mentioned, this practice has been carried out for many years, with no recorded spills due to problems with the structural integrity of a vessel in ice. However, there are a number of recommendations that can be made specific to the study of ice loads on vessels that are overwintering.

The astute reader will have noticed that the authors have not made any recommendations as to what are safe loads for an overwintering vessel. This is the responsibility of qualified naval architects, who can evaluate vessel-specific designs to make this type of assessment. Figure 21 depicts a general methodology for site-selection considerations, as they pertain to the overwintering of a vessel in ice. It can be seen in this framework that there are three categories of qualified, knowledge-based experts who need to interact in order to form a complete picture of whether a vessel in a particular location is suited to overwinter: those with relevant operational experience, ice mechanics experts, and naval architects. The simple methodology steps through the process, from the initial assessment of ice conditions at the area of interest, through the final decision of whether or not a site is suitable for the vessel in question.



**Figure 21: Decision-making process flow chart for ice load considerations for an overwintering vessel.**

It should be noted that if a potential site is in a river environment, a more comprehensive examination of the ice issues for a river is warranted than are outlined in this report. The ice conditions in the Mackenzie Delta vary greatly depending upon the location within the river. While outside of the scope of this report, a detailed examination of potential ice loads in typical overwintering locations would be beneficial as a fourth scenario.

The high ice loads from non-sheltered regions clearly points out that this is to be avoided at all costs. Thus if a barge is being towed to a sheltered or semi-sheltered location for overwintering, there must be sufficient time and contingency plans to ensure that it arrives to its mooring location safely and on-time.

Part and parcel with the selection of an appropriate overwintering site is appropriate monitoring of the ice conditions (amongst many other factors) throughout the overwintering process. For example, ice monitoring should include regular evaluations throughout the freeze-up period, to determine when the ice becomes landfast. Once landfast, monitoring should continue of this condition, as movement events can occur that could result in buckling loads, especially in locations near the landfast ice edge. Monitoring of snow depth and ice thickness adjacent to the vessel are also valuable measurements to be made, as they pertain to thermal loading and adfreeze. In the spring, regular monitoring during the break-up period for semi-sheltered locations where dynamic ice movement may be possible is also highly recommended. This monitoring should ensure that rising water levels (in a river environment) and moving pack ice will not compromise mooring line capacity. Regular photographic documentation of the ice conditions may also be useful, from the perspective of the various local communities.

From discussions with the various stakeholders involved with overwintering, it is the authors' opinion that it would be worthwhile for the ISR to implement record-keeping of overwintering fuel-storage vessels both within the settlement region, and for those relevant regions where a fuel spill could impact the ISR. This could be a simple record of the vessel type and characteristics, its overwintering location, cargo and contact information for the agency responsible for the vessel. This information would be useful from the perspective of the ISR governing body not only for monitoring but also for general notification for local residents, where the practice could be relevant for snowmobile trails and so on. While it is possible that this type of record-keeping could be forthcoming at a Federal level, it would behoove the ISR to implement their own system in the near-term. If a license or approval process is already required for practices related to overwintering (i.e. scientific research, mining or oil/gas activities, etc), then this information could be collected through that existing system, by adding those four items to the license application form. The data could be collected in a simple Excel spreadsheet or Access database, and would also serve as a long-term record of overwintering occurrences and best practices.

In the authors' discussions with locals in the ISR, it was very clear that they were frustrated by the lack of clarity of the Federal government with respect to the departmental responsibilities for overwintering of barges. During this study the authors also found it difficult to understand this task breakdown since many departments could be involved – Transport Canada, Environment Canada, Fisheries and Oceans, Aboriginal Affairs and Northern Development Canada, etc.). Therefore the authors recommend that the procedures and requirements for overwintering of barges be specifically outlined by the Federal Government for both the Inuvialuit and Operators. This should include the specific departmental names for permitting, regulating, etc. with specific contact information for emergency spill clean-up. This is directly related to the on-going work, discussed in previous sections, being carried out by Transport Canada. Clarity regarding where equivalencies to the ASPPR and Canada Shipping Act are possible, procedures to be followed, and so on, are needed, as are formalized guidelines.



It is clear that overwintering in a sheltered bay with landfast ice should always be the preferred location. When this is not possible or not practical, a semi-sheltered bay, where the dynamic conditions of the ice have been carefully assessed and the vessel has been positioned accordingly, may also provide a secure environment. Ice conditions at locations that are presumed to be landfast annually should be carefully vetted, to ensure that those conditions hold true for the entire duration of the overwintering period.

So what makes for a good location for overwintering, from an ice perspective, irrespective of the type of vessel that is overwintering?

- A sheltered spot, with a limited fetch area, to limit pack ice driving forces.
- Sufficient water depth to have clearance under the vessel so that it does not freeze to the bottom or strike the seabed at low tide.
- Minimal dynamic ice movement in the spring, to avoid ice crushing forces or large floe impacts on a vessel and/or ice loads sufficient to break mooring lines.

The authors hope that this report will provide the ISR and BREa with a useful overview of the practice of overwintering, will provide Regulators and the members of the ISR with guidance on determining the ice damage potential, and a useful framework for determining site selection considerations, as they pertain to ice loads on an overwintering vessel.

## 10. ACKNOWLEDGEMENTS

The authors would like to thank: Connie Van Rosmalen and Jaideep Johar from Transport Canada for their time and effort related to this project; Captain Keith Jones for his initial input and advice; Captain Don Connelly for providing his overview of the practice, facilitating meetings, and providing general advice and information throughout the project; Norm Snow of the Inuvialuit Joint Secretariat, Frank Pokiak, Steve Baryluk and Jennifer Lam of the Inuvialuit Game Council and James Malone of the Fisheries Joint Management Committee for meeting with the authors to discuss concerns and considerations; and Willie Moore, VP of Operations for Horizons North for taking the time to meet with us and discuss his own experience with overwintering practices in the Arctic.

The authors acknowledge the use of data products or imagery from the Land Atmosphere Near-real time Capability for EOS (LANCE) system operated by the NASA/GSFC/Earth Science Data and Information System (ESDIS) with funding provided by NASA/HQ (<http://earthdata.nasa.gov/data/nrt-data/rapid-response/>). Unless otherwise indicated, all photographs in this report were taken by the authors.

We would also like to acknowledge the support of Genevieve Carr and Tara Paul from Aboriginal Affairs and Northern Development Canada and funding from the Beaufort Regional Environmental Assessment program for this project.

## 11. REFERENCES

- ASPPR, 1989. Proposals for the Revision of the Arctic Shipping Pollution Prevention Regulations. Transport Canada Report TP 9981, Ottawa. Ont., Canada.
- Beltaos, S., Carter, T, Rowsell, R. 2012. Measurements and analysis of ice breakup and jamming characteristics in the Mackenzie Delta, Canada. *Cold Regions Science and Technology* 82, 110-123, <http://dx.doi.org/10.1016/j.coldregions.2012.05.013>
- Connelly, D. 2012. Western Arctic Winter Layup of Marine Equipment. Report prepared for the National Research Council of Canada. Victoria, Canada.
- Gatto, L.W. 1984. Reservoir bank erosion caused by ice. *Cold Regions Science and Technology* 9, 203-214.
- ISO, 2010. Petroleum and natural gas industries-Arctic offshore structures. International Organization for Standardization, ISO 19906, Geneva, Switzerland.
- Johnson, J.B. and Metzner, R.C., 1990. Thermal Expansion Coefficients for Sea Ice *Journal of Glaciology*, 124: 343-349.
- Jones, K. 2004. Draft Arctic Waters Guidelines/Standards for Lay-Up of Petroleum Barges in Land-Fast Ice. Prepared for Transport Canada, Prairie and Northern Region, Marine (RM-WIN).
- Macklin, S. A. (1983), Wind Drag Coefficient Over First-Year Sea Ice in the Bering Sea, *J. Geophys. Res.*, 88(C5), 2845–2852, doi:10.1029/JC088iC05p02845.
- Melling, H., Riedel, D.A. and Gedalof, Z., 2005. Trends in the draft and extent of seasonal pack ice, Canadian Beaufort Sea. *Geophysical Research Letters*, 32: L24501.
- Nunatsiaq News, 2008. Hunters fear oil spill from Baffinland barge. Reprinted from Nunatsiaq News April 25, 2008.  
[http://64.26.166.116/archives/2008/804/80425/news/nunavut/80425\\_1132.html](http://64.26.166.116/archives/2008/804/80425/news/nunavut/80425_1132.html)
- Sanderson, T.J.O., 1984. Thermal ice forces against isolated structures, IAHR 84 Symposium on Ice, Hamburg, Germany, pp. 289-300.
- Sanderson, T.J.O., 1988. Ice mechanics – Risks to offshore structures. Graham and Trotman Boston, 253 pp.
- Sudom, D. and Timco, G. 2008. Analysis of Loads on the SDC at Paktoa C-60 during an Ice Creep Buckling Event. Proceedings of the 19<sup>th</sup> International Symposium on Ice (IAHR'08). Vancouver, Canada. pp.1107 - 1117
- Timco, G.W., 2011. Isolated ice floe impacts. *Cold Regions Science and Technology*, 68: 35-48.
- Timco, G.W. and Frederking, R.M.W., 1990. Compressive strength of sea ice sheets. *Cold Regions Science and Technology*, 17: 227-240.

- Timco, G.W. and Johnston, M., 2004. Ice loads on the caisson structures in the Canadian Beaufort Sea. *Cold Regions Science and Technology*, 38: 185-209.
- Timco, G.W. and Sayed, M., 1993. Thermal stress in constrained ice, *Proceedings of the 11<sup>th</sup> Canadian Hydrotechnical Conference*, Fredericton, pp. 593-602.
- Timco, G.W., Watson, D.A., Comfort, G. and Abdelnour, R., 1996. A comparison of methods for predicting thermally-induced ice loads, *IAHR Symposium on Ice*, Beijing, China, pp. 241-248.
- Transport Canada, 1995. Standards and Guidelines for the Construction, Inspection and Operation of Barges that Carry Oil in Bulk. TP 11960E. Canadian Coast Guard, Marine Regulatory Directorate. Ottawa, Canada.
- Transport Canada, 2012. Addendum to Transport Canada's Written Submission to the Nunavut Impact Review Board on June 11, 2012 Respecting Overwintering. Document RDIMS#7630751-V10 - Final. (<ftp://ftp.nirb.ca/02-REVIEWS/ACTIVE%20REVIEWS/08MN053-BAFFINLAND%20MARY%20RIVER/2-REVIEW/09-HEARING/05-SUBMISSIONS/01-FINAL%20WRITTEN%20SUBMISSIONS>) Ottawa, Canada.
- Wright & Associates Ltd, Canatec Consultants Ltd and AKAC Inc., 1998. Moored vessel stationkeeping in Grand Banks pack ice conditions. PERD/CHC Report 26-189.



## **APPENDIX A - WESTERN ARCTIC WINTER LAYUP OF MARINE EQUIPMENT**

By Captain D. O. Connelly, Report prepared for the National Research Council of Canada

March, 2012



# WESTERN ARCTIC WINTER LAYUP OF MARINE EQUIPMENT



**Captain D.O. (Don) Connelly**  
Canadian Master Mariner  
DC Marine Offshore Services Inc.  
(23 March 2012)

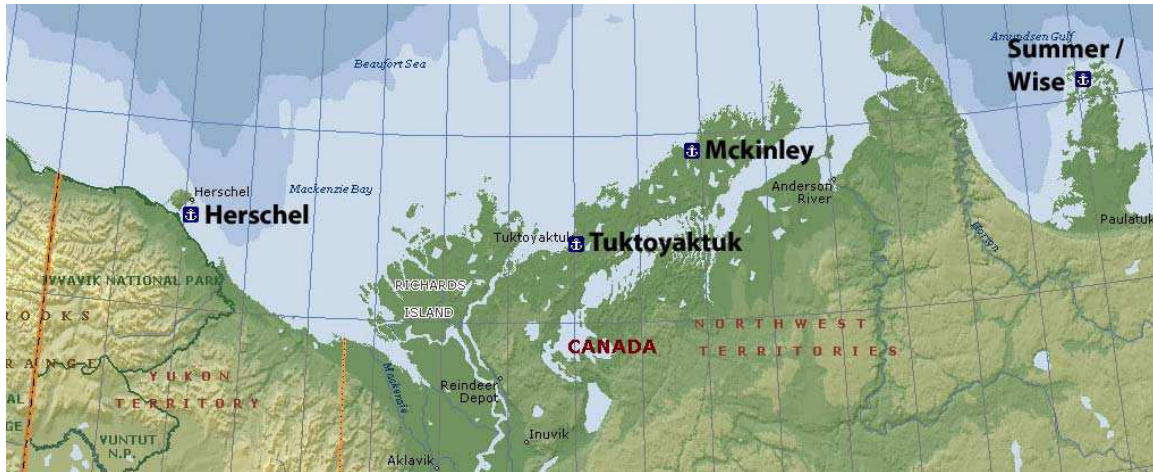
## Table of Contents

<b>General .....</b>	<b>4</b>
<b>Herschel Island Basin .....</b>	<b>5</b>
Pre Oil and Gas Exploration Period.....	5
Offshore Oil and Gas Exploration Period .....	5
Advantages.....	8
Disadvantages.....	8
Known Vessel Damage or Movement Events While Overwintering in the Herschel Basin.....	8
<b>Tuktoyaktuk .....</b>	<b>9</b>
Pre Oil and Gas Exploration Period.....	9
Oil and Gas Exploration Period.....	9
Advantages.....	11
Disadvantages.....	11
Known Vessel Damage or Movement Events While Overwintering.....	11
<b>McKinley Bay.....</b>	<b>12</b>
Pre Oil and Gas Exploration Period.....	12
Oil and Gas Exploration Period.....	12
Advantages.....	14
Disadvantages.....	14
Known Vessel Damage or Movement Events While Overwintering.....	15
<b>Wise Bay / Summer Harbour.....</b>	<b>15</b>
Pre Oil and Gas Exploration Period.....	15
Oil and Gas Exploration Period.....	15
Advantages.....	17
Disadvantages.....	17
Known Vessel Damage or Movement Events While Overwintering.....	17
<b>Mackenzie River Estuary .....</b>	<b>18</b>
Advantages.....	18
Disadvantages.....	19
Known Vessel Damage or Movement Events While Overwintering.....	19
<b>Summary.....</b>	<b>21</b>
<b>Further References .....</b>	<b>21</b>

## General

Numerous trusted locations have traditionally been used for overwintering marine equipment in the Western Canadian Beaufort: These include the Mackenzie River estuaries, used from time to time to overwinter shallow draft marine equipment, such as barges, mostly on a project related basis, as well as four other sites located throughout the region. While this report will touch on the Mackenzie River estuaries, the main focus will be the four areas listed below:

1. Herschel Island Basin,
2. Tuktoyaktuk Harbour,
3. McKinley Bay,
4. Summer Harbour / Wise Bay.



I will look at the history of short & long term overwintering<sup>1</sup> in these areas during the pre and post oil and gas exploration eras, and any known significant damage or movement events as well as general procedures used to overwinter marine equipment.

---

<sup>1</sup> Short term refers to a one year layup. Long term is anything over one year.

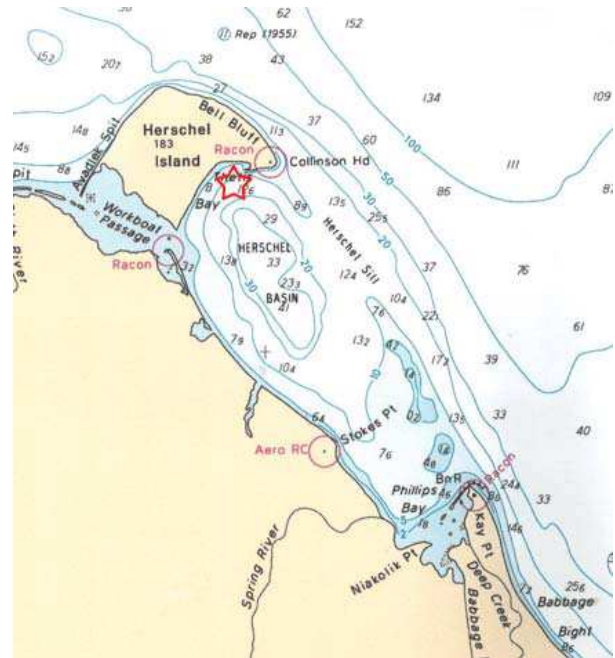
## Herschel Island Basin



Overwintering Site

### Pre Oil and Gas Exploration Period

"In the late 19th century, whalers discovered that the Beaufort Sea was one of the last refuges of the depleted **Bowhead Whale**, which was prized for its **baleen**, **blubber**, and **oil**. Commercial bowhead hunting in the area began in 1889. In order for the short **Arctic** whaling season to be profitable, it was necessary to overwinter in the area. Herschel Island was found to have a good harbour for large whaling ships."<sup>2</sup>



*Chart excerpts for reference taken from Canadian Hydrographic Chart #7620*

### Offshore Oil and Gas Exploration Period

On September 27, 1975 the first CANMAR vessel, "Canmar Supplier", arrived in the Canadian Western Arctic, and safely overwintered in Pauline Cove off Herschel Island. In October 1976 – 1977 CANMAR's first three drillships, along with their support vessels safely overwintered in Pauline Cove. Initially this was a safe winter layup location with all vessels being able to get well inside the protection of Herschel Island, in the land fast ice. However, as CANMAR, a subsidiary of Dome Petroleum, increased the number of vessels in the area, another larger site had to be located that would provide this same level of protection. They eventually settled on McKinley Bay.

<sup>2</sup> Wikipedia contributors, "Herschel Island," *Wikipedia*, The Free Encyclopedia, <http://en.wikipedia.org/w/466834797> [accessed 7 February 2012]





***CANMAR marine equipment overwintering Pauline Cove, Herschel Island 1976 – 1977.***

Later in 1983 to 1986 Beaudril, a subsidiary of Gulf Canada, also used Pauline Cove to overwinter their fleet of offshore exploration vessels, which included the “Kulluk”, a tanker for fuel storage, a support fleet of icebreakers and barges.<sup>3</sup> While Herschel Basin provided adequate overwintering on a short term basis, Beaudril needed a better long term layup site, which they found in Summer Harbour.

---

<sup>3</sup> The tanker “Gulf Beaufort” maintained crews on board throughout the period she was positioned in the Herschel basin.



***Beaudril ice breaker fleet overwintering in Herschel Basin 1983 – 1986.***

In addition to floating marine equipment overwintering in the Herschel basin area, two bottom founded drilling units, the “Molikpak” (Beaudril) and the “SSDC” (CANMAR), renamed the “SDC”, have also safely overwintered in a long term laid up status here with no movement or environmental impact. Due to the size of the “SDC”, this was the only safe area large enough for it to overwinter.<sup>4</sup>



***“SDC” in long-term laid-up status in Herschel Basin, winter of 2011.***

---

<sup>4</sup> SDC is presently laid up in the Herschel Basin off Rolland Bay.



## Western Arctic Overwintering of Marine Equipment

The Gulf caissons, also known as the Tarsuit Island caissons, were moved into Pauline Cove after being used to build a manmade island for drilling in 1981 – 1982. These four caissons sit on the sea floor and continue to be stored at this location with plans to try to move them to another location in the near future.



***Gulf Caissons, (Tarsuit Island Caissons), laid up in Pauline Cove, 2007.***

### Advantages

1. Herschel Basin has been used for years to overwinter marine equipment, providing protection from significant storm events as well as security in land fast ice in the lee of Herschel Island;
2. Herschel Basin provides easy access for deep draft vessels.

### Disadvantages

1. Herschel Island and the land mass area to the west is a designated park and is, therefore, considered an environmentally sensitive area;
2. There is a lack of nearby infrastructure support (the closest support is Tuktoyaktuk);

### Known Vessel Damage or Movement Events While Overwintering in the Herschel Basin

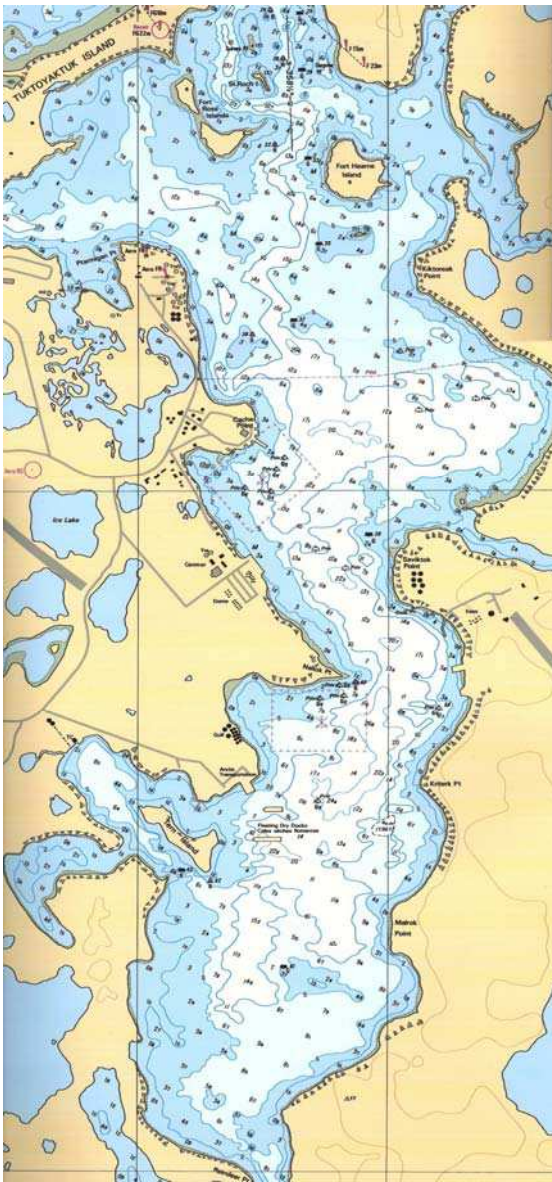
A number of movement events took place with the Beaudril fleet. However, none resulted in any damage to equipment or caused any negative environmental impact. The following movements are noted through general knowledge of those who worked in the north during this time period:

1. 2002 – 2003, Tarsuit Island Caissons—One of the four units moved during a storm event (not an ice movement event), which resulted in minor damage to one of the Caissons;

## Western Arctic Overwintering of Marine Equipment

2. 2006 – 2007, Tarsuit Island Caissons—One of the four units moved slightly during a storm event (not an ice movement event), causing no damage to Caissons;
3. 2007 – 2008, The “Kulluk” moved on moorings due to ice movement in the basin. No damage to the “Kulluk” or the environment resulted. It should be noted that the location of the “Kulluk” was well to the southeast of Herschel Island in the basin, and not in the usual overwintering location closer to Herschel Island, where the CANMAR Fleet had been laid up in 1976 – 1977, or where Beaudril traditionally overwintered.

### Tuktoyaktuk



*Chart excerpts for reference taken from Canadian Hydrographic Chart #7685*

#### Pre Oil and Gas Exploration Period

In early days, prior to the oil and gas exploration period, Tuktoyaktuk's natural harbour provided a safe haven for small shallow draft vessels and barges used in the resupply of northern settlements. Water depths were too shallow for whaling vessels, but the Hudson's Bay Company did establish a trading post in 1937 because of the natural harbour and access to the Mackenzie River. In the 1950s the Distant Early Warning site was established, and marine equipment was brought into the area and commonly overwintered in the safety of the harbour.

#### Oil and Gas Exploration Period

In 1973, the oil and gas industry commenced offshore operations, in which shallow draft support vessels and barges began using the harbour for support operations, and to safely overwinter on a regular basis. In the early 1980s, some widening of the channel took place. In the late 1980s, there was some dredging in the channel by the Dutch dredger “Cornelius Zanen”. However, the channel and harbour remains restricted to relatively shallow draft vessels, which limits overwintering of deeper draft marine equipment.

## Western Arctic Overwintering of Marine Equipment



***Overwintering at Dome Petroleum Base in Tuktoyaktuk early 1980.***

In addition to floating marine equipment, the Fednav owned Tuk Caisson, used in Imperial Oil's offshore oil and gas exploration, also remains in long term laid up status in Tuktoyaktuk Harbour.



***Fadnav's island caisson laid-up in Tuktoyaktuk Harbour.***

### Advantages

1. Vessels overwintering in Tuktoyaktuk harbour are generally secured to existing wharfs, or to pre-established mooring buoys (where the vessels are small enough it is preferable to take them out of the water and secure them on land);
2. Over wintering in Tuktoyaktuk harbour allows access to existing, year round infrastructure such as heated storage, an airport with scheduled air transportation, winter ice roads for the movement of large equipment by truck as well as being in relatively close proximity to the township of Inuvik.

### Disadvantages

1. Tuktoyaktuk harbour has a channel draft restriction for deeper draft vessels. The maximum safe channel transit draft is in the area of 4 to 4.5 meters depending on tide and wind effects;
2. The window of operations for ice-strengthened vessels mooring in Tuktoyaktuk harbor is severely minimized due to the need for the local community to take advantage of the frozen harbor conditions for as long as possible in order to operate snow machines for travel. Any movement that would cause risk to the stability of the ice would compromise this mode of travel.

### Known Vessel Damage or Movement Events While Overwintering

The Sailing Directions for Arctic Canada notes no reported damage due to ice pressure. During the offshore oil and gas exploration period, vessels were overwintered on a yearly basis with no damage from ice pressure or movement noted to either marine vessels or barges stored in Tuktoyaktuk harbour.



## McKinley Bay

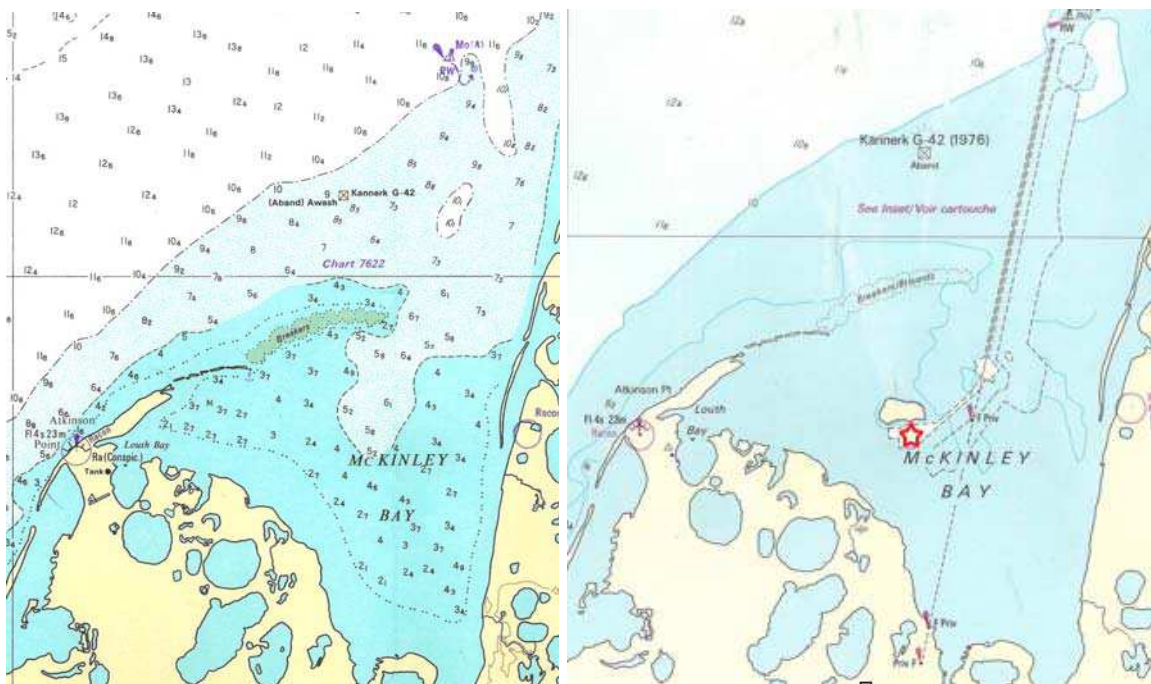


Overwintering Site

### Pre Oil and Gas Exploration Period

Because of inadequate water depths, allowing entry only to shallow draft marine equipment, McKinley Bay provided poor protection for overwintering marine equipment. This changed during the oil and gas exploration period when Canmar created a harbor there.

*Chart excerpts for reference taken from Canadian Hydrographic Chart #7663*



**McKinley Bay prior to CANMAR creating the dredged entre channel and harbour in 1979 and as it exists today**

### Oil and Gas Exploration Period

In 1976, CANMAR operations began in the area. As the size of their fleet expanded, their need for a harbour deep enough in water depth, and large enough in size to support all the marine equipment being brought into the area became essential. CANMAR converted McKinley Bay in 1979 – 1981 from a shallow four-meter water depth bay into a 10 meter harbour by dredging 12.3 million cubic meters of sand. The dredged sand was used to create a 5.5-hectare island for storage and maintenance. Access to the harbour is via a 100 meter wide dredged channel, 10 meters deep and 12 kilometers long.

## Western Arctic Overwintering of Marine Equipment



***CANMAR marine equipment over wintering McKinley Bay in 1979***

Once the McKinley Bay harbor was completed, all nature of marine equipment, including drillships, a dry-dock, support barges, support vessels and a number of large fuel storage barges were safely overwintered from 1980 through to the sale of all the marine assets by Amoco Canada to Seatankers Management Company in 1997. In 1997 – 1998 all of the marine equipment, with the exception of the drilling barge “Kulluk” was moved out of the western Canadian Arctic to other markets.



***CANMAR, McKinley Bay over wintering of marine equipment 1984.***



The Kulluk remained in long term laid up status until 2007 when Shell, the present owner, moved the Kulluk to Herschel Basin for overwintering and then moved it back to McKinley Bay in 2008. In 2010 the Kulluk was moved out of McKinley Bay to Alaska.<sup>5</sup>



***“Kulluk” in long-term laid-up status in McKinley Bay 1993 - 2007.***

### Advantages

1. McKinley Bay has deep-water access and protection for overwintering marine equipment;
2. Holding ground for anchors has proven good here as the Arctic-drilling barge “Kulluk” overwintered from 1993 to 2007 with no apparent movement of moorings;
3. McKinley Bay is situated within a reasonably close proximity to Tuktoyuktuk and existing infrastructure.

### Disadvantages

1. There is an abandoned runway on the manmade island but no dockside to access the island;
2. The mooring buoys have been removed;

---

<sup>5</sup> There is presently no marine equipment overwintering in McKinley Bay.

3. No other infrastructure exists.

### Known Vessel Damage or Movement Events While Overwintering

In the winter of 1978 – 1979 a fuel barge tied up between CANMAR drillships moved and damaged the barge's outer hull. There was fuel being stored in the centre tanks only, no fuel spill took place. It should be noted that McKinley Bay was not fully completed during this winter layup period. It can be said, however, that since McKinley Bay was completed, all manner of marine equipment has been safely laid up in the area, on both a short term, and a long term laid up status with no significant movement or damage events.

### Wise Bay / Summer Harbour

*Chart excerpts for reference taken from Canadian Hydrographic Chart #7665*



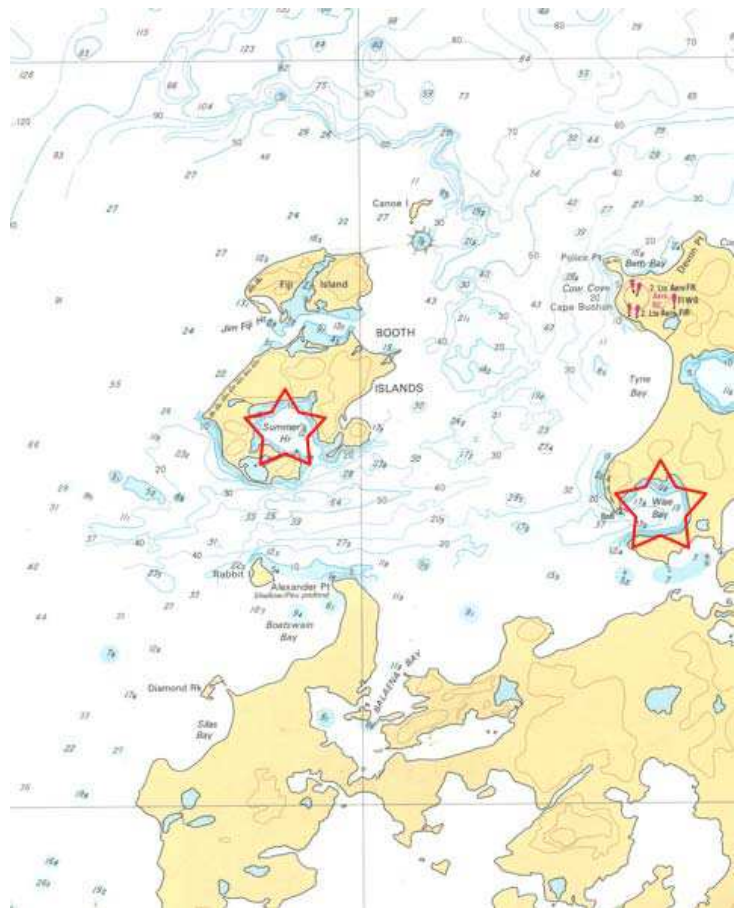
Overwintering Sites

#### Pre Oil and Gas Exploration Period

Like Tuktoyaktuk, a distant early warning site was established in the Cape Parry area in the 1950s. The closest community is Paulatuk, which is approximately 100 kilometers to the south-south east of this over wintering site. If there were any over wintering, it would have been small barges, but I could find no documentation to support this.

#### Oil and Gas Exploration Period

In 1977, prior to the development of McKinley Bay, Summer Harbour was used as an overwintering site by CANMAR and later by Beaudril. In 1981 until the late 1980s, CANMAR stationed the tanker "Skauvann" in Wise Bay to be used for fuel storage. The "Skauvann" maintained crews on board year round. In 1992 the "Kulluk" was towed from Summer Harbour for operations in the US Beaufort. Since that time, neither location has been used for overwintering marine equipment.





*Beadril equipment in Summers Harbour after overwintering.*



**Tanker "Skauvann" in Wise Bay as fuel storage, overwintered with crew onboard**

### Advantages

1. Both Summer Harbour and Wise Bay are well protected and can facilitate deep draft vessels;

### Disadvantages

1. Both Summer Harbour and Wise Bay are located at a considerable distance to infrastructure and the main area of offshore interests in the McKenzie delta region;
2. The channel entrance typically bridges over with grounded ice. This means ships must be secured early in the anchorage at the start of freeze up, and departure can be delayed until the entrance is no longer blocked;
3. The channel entrance is narrow and presents navigational challenges for larger vessels entering and exiting the overwintering areas.<sup>6</sup>

### Known Vessel Damage or Movement Events While Overwintering

As noted above, Summer Harbour and Wise Bay are well protected. For this reason, no issues of damage to, or movement events associated with marine equipment overwintering in these locations have occurred during the oil and gas exploration period.

---

<sup>6</sup> The Canadian Coast Guard vessel, "Sir John A. MacDonald" while under charter to CANMAR, went aground on a rock off to one side of the entry channel in November of 1978.



## Mackenzie River Estuary

Companies including Northern Transportation Company and Horizon North have used the river estuary to overwinter barges for many years. Overwintering is either project related (such as was done by MGM during their most recent drilling programs in the winters of 2007 and 2008), in which various locations are used, or seasonal overwintering in Inuvik. For the most part, this can be a safe way to overwinter if the right location and the right mooring arrangements are utilized in conjunction with a regular inspection schedule.



***Example of Camp and Service Barges Secure for Overwintering, (Courtesy of Horizon North)***

### Advantages

1. Overwintering in the river estuary for a land-drilling project is advantageous because the bulk of the drilling equipment and accommodation is close to the drilling project, which reduces the cost as well as any environmental impact associated with moving equipment over an ice road;
2. Having marine equipment staged and overwintered in Inuvik allows convenient access for maintenance and continuous monitoring.

### Disadvantages

1. Mooring failure at seasonal breakup is a risk for overwintered equipment in any estuary.

### Known Vessel Damage or Movement Events While Overwintering

There may have been a number of minor movement events over the years, but one significant event took place during breakup in 2008. Camp and barges secured for MGM's winter drilling program released from their moorings and drifted down the Mackenzie River towards the Beaufort Sea. All equipment was recovered with no damage or environmental impact. In the summer 2008, after reviewing the cause of the event, measures were taken to improve procedures and mooring arrangements. Camps and barges for the 2008 – 2009 drilling program overwintered without incident.



***Camp and Barges Adrift After Mooring Failed During Break Up, 2008, (Courtesy of Horizon North)***



## Procedures and Recommendations for Safely Overwintering Marine Equipment

Industry as well as classification societies have developed recommendations and procedures for laying up marine equipment. CANMAR and Beaudril based their operations on safely laying up, (overwintering), marine equipment for both short term and long term laid up programs. The following is a general list of requirements for seasonal unmanned laid up marine equipment:<sup>7</sup>

- 1) The overwintering location must provide adequate protection from storms and ice movement;
- 2) Mooring systems must include,
  - a. Appropriate mooring for the location and period of lay up, such as preset mooring buoys to prevent the vessel or barge from swinging in wind or tidal conditions,
  - b. appropriately sized mooring chain to deal with any ice movement loads at the start of freeze up,
  - c. the correct amount of anchor cable for the bottom conditions and chaffing protection where needed,
  - d. suitable fender and mooring lines between vessels over wintering along side each other;
- 3) Window coverings must be installed;
- 4) All on board domestic systems drained down and secured for freeze up conditions;
- 5) Ballast and water tanks must be drained down to prevent any structural damage during freeze up;
- 6) All mechanical and electrical equipment is to be secured appropriately throughout the vessel;
- 7) All sea suction valves and sea bays are to be secured for freeze up conditions;
- 8) Records kept of what was done to facilitate an orderly reactivation;
- 9) Regular inspections are to be carried out to insure all of the above is in place and in good order during the overwintering period;
- 10) Industry has always overwintered tankers holding large amounts of fuel with a warm stack crew on board;
- 11) Fuel barges should only have fuel in tanks that are not adjacent to the outer hull;
- 12) Fuel loaded in the winter must only be filled to summertime temperature tank levels in order to prevent overflow out of the vents during the summer, which would otherwise occur due to expansion.
- 13) Fuel carried in barges overwintered in the Mackenzie river estuary should be empty prior to breakup.

---

<sup>7</sup> Equipment laid up for longer periods require more frequent checks and may also demand different types of mooring systems as well as more extensive onboard preservation regimes.

### Summary

There is a long history of overwintering marine equipment in the Western Canadian Arctic. However, the beginning of the oil and gas exploration period saw a significant increase in the number, types and sizes of marine equipment needing to be overwintered on both a short and long term basis. Initially CANMAR and Beaudril each used Pauline Cove, off Herschel Island to overwinter their fleets. However, due to the limited size of the area, and the sensitive nature of the location because of its position adjacent to designated parks, other safe harbour sites were found, including McKinley Bay, Wise Bay and Summer Harbour. Tuktoyuktuk provides a safe overwintering location, but is draft restricted and has seasonal access issues with the community. In the case of McKinley Bay, CANMAR widened and deepened it to create an area that would adequately hold its equipment. While it is well located near Tuktoyuktuk and its protected location make it a desirable location for overwintering, it does lack infrastructure. Likewise, the Wise Bay/Summer Harbour region provided excellent protection for overwintering. Unfortunately, its distance from infrastructure, and the McKenzie Delta (where most of the offshore interests were historically located) was a disadvantage. In addition, navigational difficulties and the fact that seasonal delays transiting in and out of the anchorage area could occur due to overbridging of ice in the channel also contributed to it not being the ideal area to overwinter equipment. The Mackenzie River estuary, where much offshore oil exploration has taken place, has also been used successfully for overwintering over the years; nevertheless, mooring failure is a risk in this area during seasonal breakup.

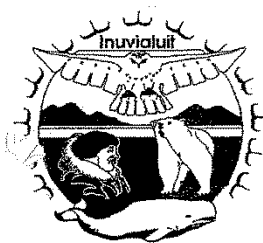
Though some equipment damage and movement events have taken place over the years in some of the areas discussed, none has caused serious harm to either the equipment or the environment. Providing the proper procedures are observed, appropriate moorings are used, and locations are carefully chosen, overwintering should continue safely in the Western Canadian Arctic.

### Further References

- CANMAR historical records
- Canadian Sailing Directions (Arctic Canada), issued by the Canadian Hydrographic Service
- Canadian Nautical Charts, issued by the Canadian Hydrographic Service
- DNV's "Guideline for the lay-up of ships", ([http://www.dnv.com/binaries/interim%20guideline%20for%20lay-up%20of%20ships\\_tcm4-348080.pdf](http://www.dnv.com/binaries/interim%20guideline%20for%20lay-up%20of%20ships_tcm4-348080.pdf))
- ABS "Vessel lay-up", ([http://www.eagle.org/eagleExternalPortalWEB/appmanager/absEagle/absEagleDesktop?\\_nfpb=true&\\_pageLabel=abs\\_eagle\\_portal\\_marine\\_oper\\_vessel\\_layup\\_page](http://www.eagle.org/eagleExternalPortalWEB/appmanager/absEagle/absEagleDesktop?_nfpb=true&_pageLabel=abs_eagle_portal_marine_oper_vessel_layup_page))



**APPENDIX B – LETTER FROM FRANK POKIAK TO  
ENVIRONMENTAL IMPACT SCREENING COMMITTEE (EISC)  
REGARDING OVERWINTERING OF FUEL FOR CCG AMUNDSEN**



Game Council

---

## INUVIALUIT GAME COUNCIL

---

October 17, 2007

Fred McFarland  
Chair, Environmental Impact  
Screening Committee  
Box 2120  
Inuvik, NT X0E 0T0

**Re: Concern over fuel storage in unregulated facilities**

Dear Mr. McFarland,

At the September 25-28, 2007 meeting of the Inuvialuit Game Council (IGC) in Whitehorse, Yukon the Council had a discussion on the issue of fuel storage over the winter in barges which are considered to be unregulated oil handling facilities. This discussion was triggered by the recent events surrounding the Circumpolar Flaw Lead (CFL) Study's plans to store a very large amount of fuel in two barges in DeSalis Bay to supply the CCGS Amundsen in the upcoming winter.

Concerns were raised that there have been issues with barges that were frozen in the ice in the past that have had leaks, including the most recent one in the last few weeks at Oniak Channel that may have been the result of a structural failure. It is felt that the barges are not designed for this type of activity and pose unacceptable risks for leakage and spills and contamination of the surrounding waters. The barges are only single-hulled and are therefore considered to be less secure than double hulled vessels. While the outer tanks of a single hull barge can be left unfilled providing an *ad hoc* secondary containment, the underside of the barge remains only a single hull design and has no such option available.

If this amount of fuel were being stored on land it would be strictly regulated and certain conditions, such as a berm, lining, and inspection, would have to be met in order to obtain a permit. The Council fails to understand how this same activity carried out on the water, whether in a freshwater channel or the offshore marine areas, does not seem to merit the same level of scrutiny and regulation.

The Council feels that this type fuel storage is an issue that will require immediate attention for future applications that include this type of fuel storage, as there is no clear indication of who is ultimately responsible for the oversight of such activities, and who is the regulatory authority should an incident occur. Without clear answers to these

---

The Joint Secretariat - Inuvialuit Renewable Resource Committees  
P.O. Box 2120 Inuvik, Northwest Territories, Canada X0E 0T0  
tel: (867) 777-2828 fax: (867) 777-2610 email: [irc-is@jointsec.nt.ca](mailto:irc-is@jointsec.nt.ca)

questions the Council does not feel that this method of fuel storage can be deemed acceptable for future activities in the Inuvialuit Settlement Region.

Sincerely,



Frank Pokiak  
Chair

**CC:**

Dave Barber; Circumpolar Flaw Lead Study

Sylvain Giguere; Regional Director General, Transport Canada

Bob Lambe; Regional Director General, Fisheries and Oceans Canada

Michael Gardiner; Assistant Commissioner, Canadian Coast Guard

Trish Merrithew-Mercredi; Regional Director General, Indian and Northern Affairs  
Canada

Tim Goos; A/Regional Director General, Environment Canada

Gordon Wray; Chair, NWT Water Board

David Foster; President, Northern Transportation Company Limited

Robert Bell; Chair, Fisheries Joint Management Committee

Aklavik HTC

Inuvik HTC

Olokhamtomiut HTC

Paulatuk HTC

Sachs Harbour HTC

Tuktoyaktuk HTC





## **APPENDIX C – THERMAL LOAD CALCULATION METHODS**

## 1. Overview of Thermal Ice Loading

An ice sheet will expand when it is subjected to an increase in temperature. During winter months, the air temperature continually changes, and as a result, ice sheet expansion leads to a force on structures placed in the ice. This section will briefly describe a number of theories that have been developed to predict thermal ice forces. The vast majority of the available theories were developed to predict loads on hydroelectric structures in closed reservoirs. Note that the section is not exhaustive in terms of available theories. Instead it is meant to provide some guidance on the types of factors that affect thermal loads on structures placed in ice-covered waters.

Over the years, there have been several theories proposed to calculate the thermally-induced ice force. These theories calculate either a *global load*, or a *local pressure* due to a change in temperature. Theories that calculate the load has been developed by Belkov (1973), Drouin and Michel (1974), Bomeng (1981), Sanderson (1984), Bomeng (1986), Fransson (1988), Sanderson (1988) and Comfort et al. (2003). In addition, Timco and Johnston (2004) have developed a predictive equation that can be used to estimate buckling loads due to ice creep which provides guidance on thermally-induced loads on offshore structures. The ISO Arctic Structures Code 19906 ISO19906 (2010) contains some information on thermal loads. The theories that predict local pressures are those due to Bergdahl (1977), Bergdahl (1978) and Cox (1984). Each of these theories will be briefly described below.

### 1.1 Belkov (1973)

Belkov (1973) translated the Russian SN 76-66 code and it was published by the National Research Council of Canada. The code predicts the load due to thermal expansion of ice by the formula:

$$P_t = (R_o h + 2 \alpha h \eta \mu \phi) s$$

where,

- $P_t$ : static load in T/m;
- $R_o$ : elastic limit of ice ( $R_o = 5 \text{ T/m}$ );
- $h$ : thickness of ice cover in metres. The value chosen should be the thickness of ice with 1% probability of being exceeded;
- $\alpha$ : coefficient of linear expansion of ice ( $\alpha = 5.5 \times 10^{-5} \text{ } ^\circ\text{C}^{-1}$ );
- $\eta$ : rate of air temperature increase during a 6-hour time period. The code specifies that for the four six-hour periods in a day, the highest value of  $\eta$  is taken;
- $\mu$ : coefficient of ice viscosity in  $\text{T hr/m}^2$  which is calculated as follows:
  - if the ice temperature,  $t \geq -20^\circ\text{C}$ , then  $\mu = (3.3 - 0.28t + 0.083t^2)10^4$
  - if the ice temperature,  $t < -20^\circ\text{C}$ , then  $\mu = (3.3 - 1.85t)10^4$ ;
- $t$ : ice temperature determined by the formula:  $t = \theta\eta_o + (\eta\tau/2)\phi$ ;
- $\theta$ : initial air temperature in  $^\circ\text{C}$ ;
- $\eta_o$ : relative thickness of ice cover determined by the formula:  $\eta_o = h/h_\pi$ ;
- $h_\pi$ : reduced thickness of ice cover determined by:  $h_\pi = h + h_c(a/a_c)^{0.5} + \lambda/\alpha_b$ ;
- $h_c$ : observed least thickness of ice cover in metres;
- $a$ : thermal diffusivity of ice ( $a = 0.0041 \text{ m}^2/\text{hr}$ );

- $a_c$ : thermal diffusivity of snow ( $a_c = 0.002 \text{ m}^2/\text{hr}$ );
- $\lambda$ : thermal conductivity of ice ( $\lambda = 2 \text{ kcal/m hr degree}$ );
- $\alpha_b$ : coefficient of heat transfer from air to a snow-ice surface in  $\text{kcal/m}^2 \text{ hr}$  which is calculated as follows:
- if snow is present, then  $\alpha_b = 20(w + 0.3)^{0.5}$
  - if there is no snow cover, then  $\alpha_b = 5(w + 0.3)^{0.5}$ ;
- $w$ : mean peak wind velocity in  $\text{m/sec}$  during the time period chosen for the rate of air temperature increase, ';
- $\phi, \Phi$ : coefficient  $\phi$  and  $\Phi$  determined from Figures in the report;
- $\tau$ : time period in hours;
- $s$ : coefficient determined by the extent of ice cover ( $E$ ) where  $s = 1$  for  $E < 50\text{m}$ ,  $s = 0.9$  for  $E = 51$  to  $75 \text{ m}$ ,  $s = 0.8$  for  $E = 76$  to  $100 \text{ m}$ , and  $s = 0.7$  for  $E = 101$  to  $150 \text{ m}$ .

### 1.2 Drouin and Michel (1974)

Drouin and Michel (1974) present a rheological equation predicting ice pressure based largely on uniaxial testing of snowpack (T1), and columnar ice (both S1 and S2).

$$d\sigma/dt = \epsilon' E_a - 2b\beta E_a [(n_0/\beta + \epsilon' t) - \sigma(t)/E_a] (\sigma(t)/2p)^m$$

where  $\sigma$  is the stress,  $\epsilon'$  is the strain rate, and  $t$  is time

The model uses the following parameters applicable to snowpacked ice:

- $E_a$ : Apparent Young's modulus,  $E_a = 4.52 e^{2060/T}$  in  $\text{kg/cm}^2$  where  $T$  is the temperature in Kelvin degrees.
- $m$ : Exponent ( $m = 4$ );
- $n_0$ : Initial number of dislocations ( $n_0 = 10^9/\text{cm}^2$ ).
- $\beta$ : Rate of multiplication of dislocations ( $\beta = 10^9/\text{cm}^2$ ).
- $p$ : Parameter,  $p = 367 e^{(-0.04*\theta)}$  where  $\theta$  is the temperature in Celsius degrees.
- $b$ : Burgers vector ( $b = 4.523 \text{ Angstroms}$ ).

The model uses the following parameters applicable to columnar ice deformed perpendicular to the optical axis:

- $E_a$ : Apparent Young's modulus,  $E_a = c e^{0.079} \exp(1335/T)$  in  $\text{kg/cm}^2$  where  $T$  is the temperature in Kelvin degrees and  $c = 344$  or  $249$  depending on whether the strain rate  $\epsilon$  is in  $\text{sec}^{-1}$  or  $\text{min}^{-1}$  respectively;
- $m$ : Exponent ( $m = 3.7$ );
- $n_0$ : Initial number of dislocations ( $n_0 = 5 \times 10^5/\text{cm}^2$ ).
- $\beta$ : Rate of multiplication of dislocations ( $\beta = 10^9/\text{cm}^2$ ).
- $p$ : Parameter,  $p = 367 e^{(-0.04*\theta)}$  where  $\theta$  is the temperature in Celsius degrees.
- $b$ : Burgers vector ( $b = 4.523 \text{ Angstroms}$ ).

The model calculates pressure at equally spaced ice intervals by projecting a sinusoidal temperature rise through the ice. The initial temperature profile of the ice is linear with the surface ice temperature assumed equal to the air temperature and the ice temperature at the ice-water boundary assumed to be 0° C.

### 1.3 Bergdahl (1977, 1978)

Bergdahl (1977) and Bergdahl (1978) developed a model for predicting pressure in the ice. Given the rate of temperature change at a fixed depth in the ice, pressures are calculated using a uniaxial rheological model consisting of a spring and nonlinear dashpot connected in series. Bergdahl's model is defined as:

$$\varepsilon = \sigma/E + KD(\sigma/\sigma^*)^n$$

where,

- $\varepsilon$ : ice strain;
- $\sigma$ : ice stress;
- $\sigma^*$ : unit stress of 1 Pa;
- D: diffusion coefficient;
- E: effective elastic modulus of ice;
- K: a constant ( $K = 4.40 \times 10^{-16} \text{ m}^{-2}$ );
- n: a constant ( $n = 3.651$ ).

The effective elastic modulus of ice, E is defined as  $E = (1 - C\theta) 6.1 \text{ GPa}$  where  $\theta$  is the ice temperature and C is a constant ( $C = 0.012^\circ\text{C}^{-1}$ ). E, K, and n were determined from testing S1 ice loaded perpendicular to the optic axis at  $-10^\circ\text{C}$ .

The diffusion coefficient, D is defined using the Arrhenius equation:

$$D = D_0 \exp(-Q/RT)$$

where

- Q: the activation energy for self diffusion ( $Q = 59.8 \text{ kJ/mole}$ );
- R: gas constant ( $R = 8.31 \text{ J/mole K}$ );
- T: the absolute temperature;
- $D_0$ : a constant ( $D_0 = 9.13 \times 10^{-4} \text{ m}^2/\text{s}$ ).

### 1.4 Xu Bomeng (1981, 1986)

Bomeng (1981) and Bomeng (1986) based on data collected from reservoirs in Northern China, presents the following formula predicting average pressure within an ice sheet.

$$P = K \cdot K_s \cdot C_h (3 - t_a)^{1/2} \Delta t_a^{1/3} (T^{0.26} - 0.6) / -t_a^{3/4}$$

where

- P: average pressure of the ice sheet ( $\text{kg/cm}^2$ );
- $t_a$ : initial air temperature ( $^\circ\text{C}$ ) recorded at 8:00 A.M., usually not above  $-10^\circ\text{C}$ ;

- $\Delta t_a$ : air temperature rise between 8:00 a.m. and 2:00 p.m. For longer duration rises, 2:00 P.M. the second or third day may be used ( $^{\circ}\text{C}$ );
- $T$ : duration in hours of temperature rising. Use  $T = 6$  hrs for a 8:00 a.m. to 2:00 p.m. rise, or for two or more days,  $T = 30$  hrs;
- $K_s$ : factor of snow cover where  $K_s=1.0$  when snow is absent; and  $K_s=0.5$  to  $0.6$  when 10 - 15 cm snow is observed throughout the season;
- $C_h$ : conversion factor based on ice thickness ( $h$ ) where  $C_h = 0.391$  for  $h = 0.4\text{m}$ ,  $C_h = 0.311$  for  $h = 0.6\text{m}$ ,  $C_h = 0.274$  for  $h = 0.8\text{m}$ ,  $C_h = 0.252$  for  $h = 1.0\text{m}$ , and  $C_h = 0.237$  for  $h = 1.2\text{m}$ .
- $K$ : coefficient accounting for all other factors (composite effects) which is affected by the surface area of the reservoir and the conditions for ice expansion. From Bomeng's observations,  $K$  ranges from 3.5 - 4.0 for small reservoirs to 4.5 - 5.0 for large reservoirs.

Bomeng (1986) also predicts a design value for ice load.

$$P_G = 13.73 h \cdot K \cdot C_h \cdot m_t$$

where

- $P_G$ : load due to thermal expansion (T/m);
- $h$ : thickness of ice (m);
- $m_t$ : time factor of temperature rise such that  $m_t=1.00$  for  $h < 0.50\text{m}$  and  $m_t=1.82$  for  $h > 0.70\text{m}$ .

### 1.5 Sanderson (1984, 1988)

Sanderson (1984) provided an overview of thermal ice loads on offshore platforms and discussed the role of ice thickness. He showed that for ice constrained within a reservoir or bay, the thermal load does not depend upon ice thickness for thicknesses above 0.5m. This occurs since the temperature change "wave" does not propagate below this ice thickness. As such, the ice in the lower portion of the ice sheet does not undergo thermal stresses with change in temperature. In this case of a constrained ice, he indicates that loads of 0.2 to 0.6  $\text{MN}\cdot\text{m}^{-1}$  are possible. For ice that is not constrained (i.e. in the open sea) the loads do depend upon ice thickness (since the lower ice will be constraining the expansion of the upper layer of ice. In this case, he indicates that the forces could be as high as 2  $\text{MN}\cdot\text{m}^{-1}$  for wide structures. Sanderson (1984) does not provide predictive equations but does outline approaches to estimate thermal loads.

Sanderson (1988) has developed equations for predicting creep buckling loads based on two different methodologies. One approach uses the wavelength of the buckled ice to estimate the force. Sanderson has shown that the buckle wavelength is given by:

$$\lambda_0 = \pi \cdot \sqrt{\frac{\bar{\sigma} h}{2\rho_w g}}$$

where

- $\lambda_0$  = half-wavelength of the dominant creep buckle
- $\bar{\sigma}$  = average stress ( $\text{N}/\text{m}^2$ )
- $h$  = ice thickness (m)
- $\rho_w$  = density of seawater ( $\text{kg}/\text{m}^3$ )



$g$  = gravitational acceleration ( $\text{m/s}^2$ )

Sanderson (1988) also showed that the force was related to the time for the ice buckling event. He derived the following equation for the Time Constant of the event:

$$T_0 = \frac{\rho_w g h}{3n \bar{\epsilon} \bar{\sigma}}$$

where

$T_0$  = time constant, or length of time over which the dominant creep buckle grows (s)

$n$  = creep index, a constant representing the slope of the line for stress plotted against the log strain-rate; for ice  $n$  is generally taken as 3

$\bar{\epsilon}$  = average strain rate ( $\text{s}^{-1}$ )

### 1.6 Cox (1984)

Cox (1984) made two changes to Bergdahl's model. He chose a lower effective modulus of ice, 4 GPa instead of 6 GPa; and where Bergdahl used the Arrhenius equation to describe the effect of temperature on the creep rate of ice, Cox defined a new function,  $A(T)$ , based on the Drouin and Michel (1974) curves. Bergdahl's modified rheological model is now defined as:

$$\epsilon = \sigma/E + A(T)(\sigma/\sigma^*)^n$$

where  $A(T)$  is a function describing the effect of temperature on the creep rate of ice. Cox fit the data such that:

$$A(T) = B(T^*/T)^m$$

where

B: Coefficient ( $B = 2.46 \times 10^{-29} \text{ s}^{-1}$ );

$T^*$ : Unit temperature;

m: exponent ( $m = 1.92$ ).

### 1.7 Fransson (1988)

To predict maximum load due to thermal expansion of ice, Fransson (1988) uses a two-step process: (1) The maximum ice pressure at the centre of the ice is analytically determined; and (2) the maximum load is then calculated by assuming a pressure distribution through the ice.

Fransson's analytical expression for maximum pressure at the centre of the ice is written as:

$$\sigma_{0.5}^{\max} = a_1 (-\theta_0) b^{0.5} \exp[-a_2 h (-b/\theta_0)^{0.5}] \quad (0.2 < h < 2 \text{ m})$$

where,

$\sigma_{0.5}^{\max}$ : maximum stress at the centre of the ice sheet in kPa;

- $\theta_0$ : initial air temperature in °C;  
 $b$ : rate of air temperature rise in °C/hr;  
 $h$ : thickness of ice in metres;  
 $a_1$ : constant where  $a_1 = (\alpha/c) k_1^{-1}/4 = (100)*0.224 = 22.4$ ;  
 $a_2$ : constant where  $a_2 = k_2/(4a) = 2.49$ ;

Fransson's formula for maximum load is written as:

$$P = \beta \sigma_{0.5}^{\max} d$$

where,

- $P$ : total horizontal force from the ice pressure;  
 $\beta$ : function of the shape of the stress distribution. Based on experimental data, Fransson determined this value to be 0.7.

Fransson also gives us a simple design load equation.

$$P_c = 2 (-\theta_0)^{1.5} \text{ for } (h > 0.5 \text{ m})$$

where,

- $P_c$ : design value of thermal ice load in kN/m;  
 $\theta_0$ : initial temperature in °C. This temperature should be the coldest week temperature during a 10 year period.

### 1.8 Comfort et al (2003)

Comfort et al. (2003) developed predictive equations for ice loads on hydroelectric dams based on several years of measurements at a number of dam sites. They suggest that the Line Load ( $LL_{therm}$ ) in kN/m can be determined from:

$$LL_{therm} = 0.064 \Delta A^{0.6} h^{0.88} Dur^{f(\Delta A)}$$

where

- $f(\Delta A)$  Min (log 160/ $\Delta A$ , 0)  
 $\Delta A$  is the ice temperature profile area change (in °C·cm),  
 $h$  is the ice thickness (in cm),  
 $Dur$  is the event duration (in days).

### 1.9 Timco and Johnston (2004)

Timco and Johnston (2004) have analyzed ice loading events on wide caisson structures in the Beaufort Sea. They have developed an empirically-based equation that relates the load to the failure mode of the ice. For creep buckling, the global load on a wide structure can be calculated from:

$$L_{gl} = T_{fm} wh$$

where  $L_{gl}$  is the global load on the structure (in MN),  $w$  is the width of the structure (in m), and  $h$  is the ice thickness (in m). The value of the failure mode parameter,  $T_{fm}$ , depends on the type of ice failure for the event being analyzed. For long-term creep, Timco and Johnston (2004) gave a value of  $T_{fm} = 0.83 \text{ MN/m}^2$ .

### **1.10 ISO Arctic Structures Standard 19906 (2010)**

ISO19906 (2010) has provided limited guidance on methods for calculating ice loads on offshore Arctic structures. It notes that based on full-scale measurements made in Russian and Canadian sea areas, sea ice does not expand appreciably for ice temperatures above  $-10^\circ\text{C}$  for salinities greater than 3 ‰ or above  $-7^\circ\text{C}$  for salinities greater than 1 ‰. ISO19906 (2010) states for a preliminary assessment of thermal actions, indicative values in the range of 150 kN/m to 300 kN/m can be used regardless of the ice thickness.

## **2. REFERENCES**

- Belkov, G., 1973. Instructions for Determining Ice Loads on River Structures (SN 76-66), National Research Council of Canada NRC TT - 1663, Ottawa Canada.
- Bergdahl, L., 1977. Physics of ice and snow as effects thermal pressure, Chalmers University of Technology Report Series A: 1, Goteborg, Sweden.
- Bergdahl, L., 1978. Thermal ice pressure in lake ice covers, Chalmers University of Technology Report Series A: 2 Goteborg, Sweden.
- Bomeng, X., 1981. Pressure Due to Expansion of Ice Sheet in Reservoirs, IAHR Ice Symposium 1981, Quebec City, Canada, pp. 540-550.
- Bomeng, X., 1986. Design Value of Pressure Due to Expansion of Ice Sheet in Reservoir, IAHR Ice Symposium 1986, Iowa City, USA., pp. 231-238.
- Comfort, G., Gong, Y., Singh, S. and Abdelnour, R., 2003. Static ice loads on dams. Canadian Journal of Civil Engineering, 30: 42-68.
- Cox, G.F.N., 1984. A preliminary investigation of thermal ice pressures. Cold Regions Science and Technology, 9(3): 221-229.
- Drouin, M. and Michel, B., 1974. Pressures of thermal origin exerted by ice sheets on hydraulic structures. CRREL Report TL 427, U.S. Army Cold Regions Research and Engineering Laboratory, Hanover, N.H.
- Fransson, L., 1988. Thermal Ice Pressure on Structures in Ice Covers, Lulea University of Technology, Sweden.
- ISO19906, 2010. Arctic offshore structures Standard 19906, Petroleum and natural gas industries., Adopted by ISO and first edition published 2010-12-15.
- Sanderson, T.J.O., 1984. Thermal ice forces against isolated structures, IAHR 84 Symposium on Ice, Hamburg, Germany, pp. 289-300.
- Sanderson, T.J.O., 1988. Ice mechanics – Risks to offshore structures. Graham and Trotman Boston, 253 pp.
- Timco, G.W. and Johnston, M., 2004. Ice loads on the caisson structures in the Canadian Beaufort Sea. Cold Regions Science and Technology, 38: 185-209.



<b>REPORT NUMBER</b> OCRE-TR-2012-008		<b>PROJECT NUMBER</b> A1-000023		<b>DATE</b> August, 2012	
<b>REPORT SECURITY CLASSIFICATION</b> Unclassified				<b>DISTRIBUTION</b> Unlimited	
<b>TITLE</b> Overwintering of Barges in the Beaufort - Assessing Ice Issues and Damage Potential					
<b>AUTHOR(S)</b>  A. Barker and G. Timco					
<b>CORPORATE AUTHOR(S)/PERFORMING AGENCY(S)</b>					
<b>PUBLICATION</b>					
<b>SPONSORING AGENCY(S)</b> Beaufort Regional Environmental Assessment (BREA)					
<b>RAW DATA STORAGE LOCATION(S)</b>				<b>PEER REVIEWED</b> Yes	
<b>MODEL #</b>		<b>PROP</b>		<b>EMBARGO PERIOD</b> 0 Months	
<b>PROJECT</b>		<b>GROUP</b> ---		<b>PROGRAM</b> Arctic	
<b>FACILITY</b>					
<b>KEY WORDS</b> overwinter; barge; landfast; ice; Beaufort				<b>PAGES</b> 43+app	<b>FIGS.</b> 21
				<b>TABLES</b> 3	
<b>SUMMARY</b>  <p>The report steps through illustrative scenarios, in order to provide examples of the types of ice loads that could occur in representative overwintering locations in the Canadian Beaufort Sea. These scenarios lead to the provision of a framework of methods used to evaluate ice loads on vessels. This framework can be applied to assess ice loads on a specific vessel with known structural integrity at a specific location, by a team of qualified operational, ice mechanics and naval architect experts. No design considerations are provided, as that assessment would be too case specific to be of use in an overview of this subject area. The authors conclude that a sheltered spot, with a limited fetch area, to limit pack ice driving forces is key to minimizing the likelihood of damage due to ice.</p>					
<b>ADDRESS</b> NRC - Ocean, Coastal and River Engineering - M32, 1200 Montreal Road, Ottawa, ON K1A 0R6					